

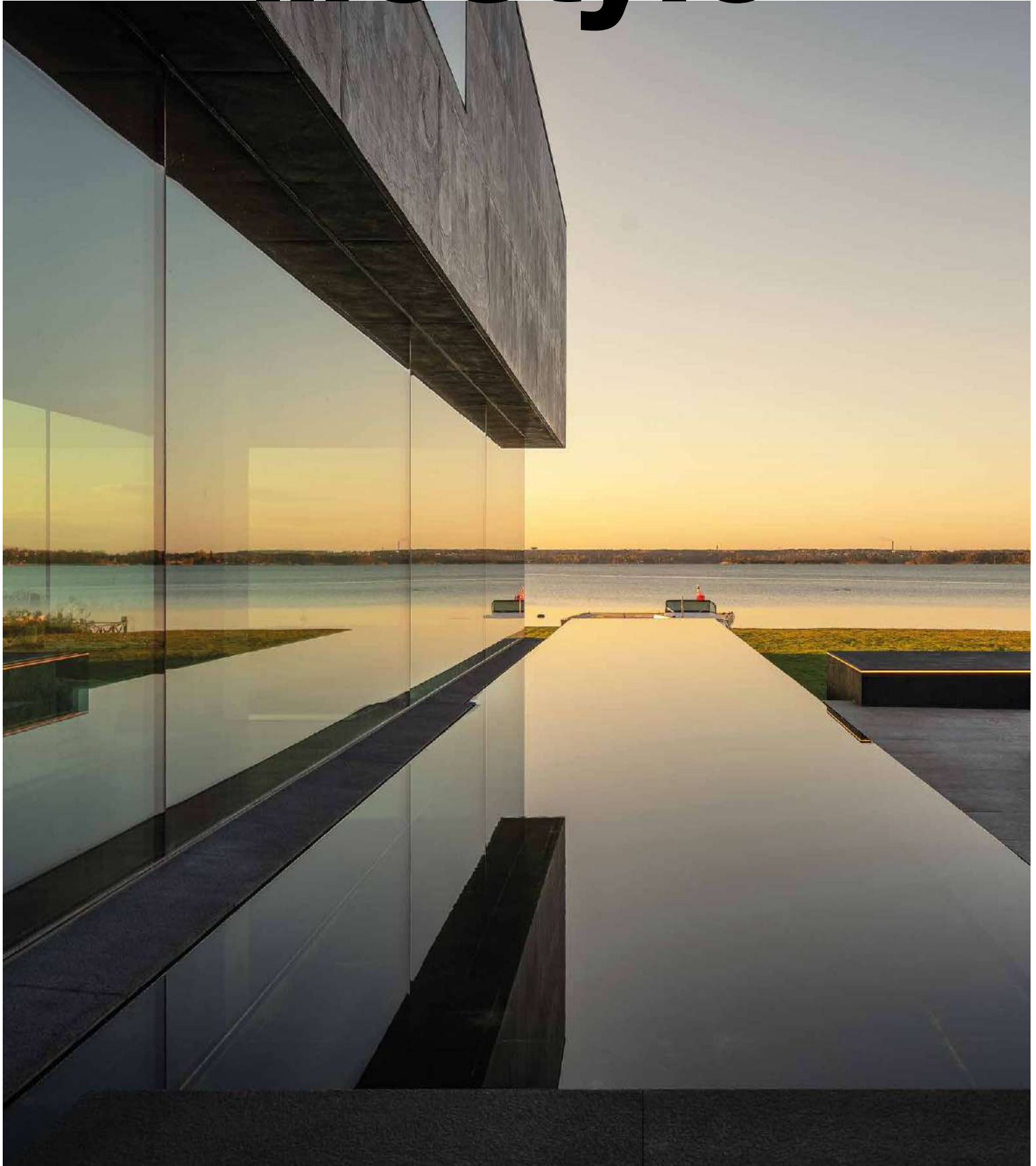


BY APPOINTMENT TO
HER MAJESTY THE QUEEN
MANUFACTURER AND SUPPLIER OF
OF CHINA TEA AND SUGAR PRODUCTS
PORCELANOSA GROUP LIMITED

PORCELANOSA Grupo

PORCELANOSA lifestyle

ISSUE NO. 39 / 5 EUROS



THE PERFECT HOME Light and beauty in Stockholm **LARGE FAÇADES** New York / Barcelona / Arlington / Ibiza

CREATIVE VANGUARD New from the PORCELANOSA Group brands

SANTIAGO CALATRAVA puts his stamp on the Dubai World Expo **MASSIMO ROJ** Materials as a field of experimentation

SAWARA ARCHITECTS Character and elegance in Taiwan **THE BEST PROJECTS** in Jamaica/ Chile / Moscow/ Valencia



PORCELANOSA

Revestimiento: Brick Vetri Blu 33,3 cm x 59,2 cm

porcelanosa.com



PORCELANOSA Grupo

OXO
ESTRUCTURAL MINIMALISM



noken
PORCELANOSA BATHROOMS

PORCELANOSA lifestyle

editorial

Continent and content

The dictionary has been nourished by new words that help us define and address situations that concern and affect us globally, socially and individually.

Actions follow the words that we all use without hesitation, determining the path to be taken to restore healthy spaces, to create sustainable environments for the future, and to value beauty, quality and constructive empathy.

In this new scenario, large, medium and small architecture studios, interior design studios, developers and builders carry out their work, all of them active agents in the great challenges of the future. To create community, enhance life in big cities, provide comfort in rural spaces, nurture coexistence, grow without destroying. Also to seek excellence in materials, in avant-guard creativity, in technology. All of this is already incorporated into the work of this essential sector in which the **PORCELANOSA Group** participates with its companies. Our experience has earned us the trust of professionals for whom the highest demands are the norm, and who know that we provide answers and solutions tailored to their needs. Together we move forward along a path which brings together needs, desires, and an unwavering determination to ensure a job well done.



Cover story. **The architect Benjamin Calleja Westling and his wife, the interior designer Patricia Ramos, have successfully transferred the light and essence of the Mediterranean to their wonderful home in Stockholm.**

Photo: Nicolas Botas.

EDITORIAL BOARD

Cristina Colonques
Sandra del Río
Manel Alagarda

CREATIVE DIRECTION AND GRAPHIC DESIGN

Vital R. Garcia Tardón

PRODUCTION

ZETACORP
The Zeta Group Corporate Communication
Unit - Prensa Ibérica
Catalogue no.: B-10622-2020

THE PORCELANOSA Group

is not responsible for the opinions expressed in the articles, these being the exclusive responsibility of the respective authors.



PORCELANOSA KITCHENS

emotions®

Kitchen: Emotions® E9.30 Xtone Liem Dark / E7.00 Roble Carbón
 Floor Tile: Devon Bone 29,4 cm x 180 cm
 Tap: Bridge Slim Cobre
 Seats: Sling Sable
 Lighting: Cut

GAMADECOR
 porcelanosakitchens.com



PORCELANOSA lifestyle

contents / number 39

18

Many new products were presented in Bologna, characterised by large ceramic formats, designs with more realistic and natural textures, and industrialised solutions for both residential and commercial contracts.



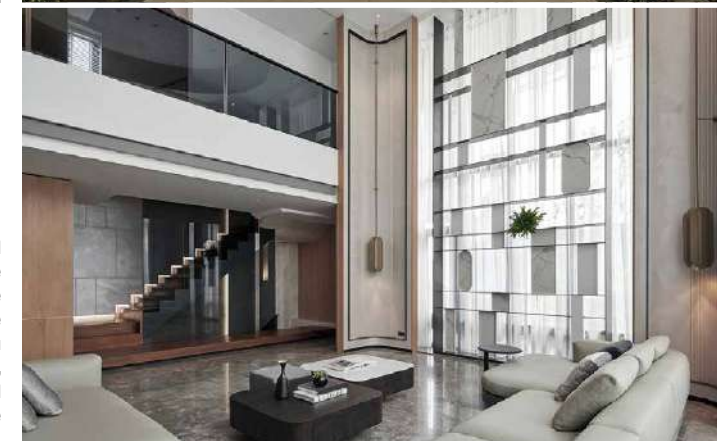
44

Facing the Caribbean Sea stands this exclusive villa, to which the materials of the PORCELANOSA Group bring elegance and serenity.



58

Sawara Architects and M.P. Architecture have led the design of three exclusive homes. The interior design, by Hochu Space and Load Studio, has added character and elegance thanks to the use of XTONE.



82

Santiago Calatrava has designed two of the most innovative pavilions at this great global event, with the collaboration of the PORCELANOSA Group.

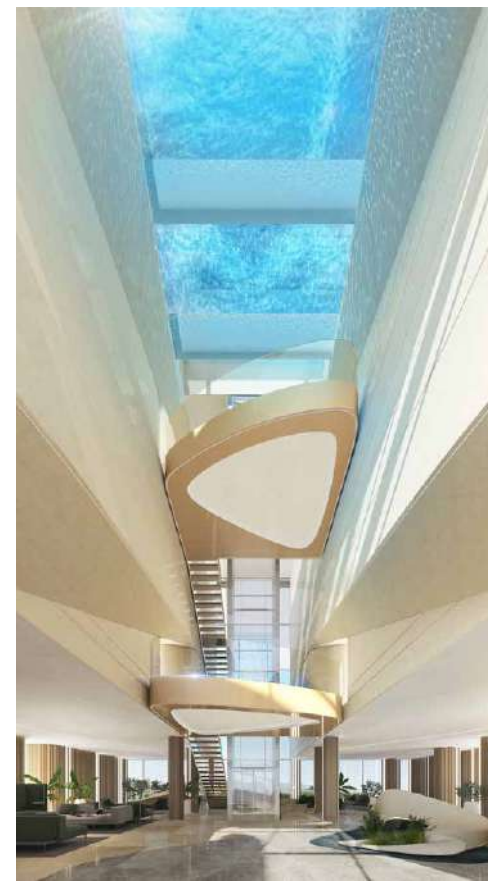


- 8 ARCHITECTURE NEWS**
- 10 DESIGN NEWS**
- 12 TRENDS**
- 14 TAMARA FALCÓ & GAMADDECOR**
The kitchen, where the best moments take place.
- 18 CERSAIE**
New from the PORCELANOSA Group.
- 26 SOLIDKER**
The material with infinite possibilities.
- 30 PROFILE MASSIMO ROJ**
Architecture as a social responsibility.
- 34 THE DREAM VILLA**
In Stockholm, a dream made reality.
- 44 HAPPY HOUR VILLA**
Jamaican paradise has a name.
- 50 FAÇADES**
- 58 SAWARA ARCHITECTS**
Contemporary elegance made in Taiwan.
- 66 VILLA SECRETA**
Spaces and materials enhance the Mediterranean magic on this Balearic Island.
- 72 RESIDENTIAL BUILDING AC33**
A model renovation in Valencia.
- 78 SANTIAGO DE CHILE**
Clean lines with contemporary style.
- 82 CALATRAVA IN DUBAI**
The Valencian architect designs two pavilions at Expo 2020.
- 88 APARTMENT IN MOSCOW**
Shades and shapes to enhance the light.
- 92 ONLY YOU HOTEL VALENCIA**
A new success for the Palladium Group in the heart of the city.
- 98 INTERVIEW MANUEL CLAVEL**
The architect who works from a position of optimism.
- 102 PROJECTS: VSB WINE CELLAR**
- 104 STORES NEWS**
The PORCELANOSA Group opens in Milan.
- 106 TALKING ABOUT...**
BAM - Milan Tree Library.



A sustainable lighthouse on the Athenian coast

The British studio Foster + Partners has presented the design of a 620-hectare master plan whose centrepiece is the Marina Tower, a 200-metre-high skyscraper which will house 200 apartments spread over 45 vegetation-covered floors. The project, on the site of the former Athens International Airport, offers a new vision for the future of Mediterranean coastal development, designed to make the most of natural resources and enhance the building's bioclimatic features.



Exclusivity by Pininfarina

Italian designer Pininfarina, creator of legendary icons of the motor world, dives into the world of architecture with Liora, a complex of 37 luxury residences in Estepona on the Costa del Sol. White lines and enveloping shapes inspired by the Mediterranean coast characterise this exclusive project surrounded by a botanical garden of more than 15,000 m².

Kundoo, 2021 RIBA Charles Jencks Award

Acclaimed Indian architect Anupama Kundoo has been awarded the 2021 RIBA Charles Jencks Award by the Jencks Foundation and the Royal Institute of British Architects (RIBA). The award recognises Kundoo's holistic practice, which combines technical research, experimentation with reused materials and technologies, and sustainable construction methods based on traditional techniques. Trained in Mumbai, Anupama Kundoo lives in Berlin and, alongside her work as an architect, works as a lecturer and professor at universities around the world.



Portrait: Andreas Dathner. Photo: Javier Callejas.

L'ANTIC COLONIAL



BY APPOINTMENT TO
HER MAJESTY THE QUEEN
BY APPOINTMENT TO
HER ROYAL HIGHNESS THE PRINCESS OF WALES
MANUFACTURER AND DISTRIBUTOR
OF CERAMIC TILE FINISHES AND PRODUCTS
FOR INTERIOR AND EXTERIOR PROJECTS
PORCELANOSA GROUP LIMITED

PORCELANOSA Grupo
anticolonial.com

FLOOR COVERING HALL IL BROWN 32,21 CM X 133,43 CM X 0,8 CM
COMPLEMENTS NAIROBI GREY CLASSICO

Ilse Crawford, medal for humanist design

The British designer has been awarded the London Design Medal 2021. A pioneer in reflecting on the issue of well-being in design, Crawford is the founder of the multidisciplinary studio Studioilse, a commitment that she combines with her work as a teacher and creative director. Her immersive interiors based on human connection can be seen in heterogeneous projects ranging from health centres to community dining rooms, passing through *lounge clubs*, like the one created for Cathay Pacific in Hong Kong (*central image*), or meeting rooms for Plaza 66 in Shanghai (*left*), with a constant interplay of textures and materials.



Photos: Li Ma. Portrait: Steve Pyke / Hulton / Getty Images.

Haute couture at the great furniture design event

Milan's Salone del Mobile 2021 has once again been the global epicentre of furniture design. Large fashion firms also gathered to display their proposals for the home. Among them was Hermès, which opted for natural raw materials and *savoir-faire* in a large, immersive and multisensory installation in the venue La Pelota, to display the company's collection of furniture, objects and textiles.

Dior worked in collaboration with 17 artists and designers for its exhibition of medallion chairs, with which it pays tribute to the Louis XVI style chair, the flagship of the *Maison*.

Gucci, meanwhile, presented its new lifestyle collection in an original pop up, playing with maximal style with a retro air.



Cask, classic beauty by Norm Architects

The Danish studio Norm Architects has created the Cask collection for Expormim, a range which includes sofas, armchairs and seating islands, with pure lines, rounded shapes and a balanced style.

With the captivating beauty that characterises classic designs, Cask fits into any contemporary atmosphere, thanks to its versatility and the sobriety of its finishes that, together with its comfort and elegance, make the collection the embodiment of formal refinement.



Photo: Marco Bertorello AFP / Getty Images.

Three Wishes Collection



RABAT

BARCELONA - IBIZA - MADRID - TARRAGONA - VALENCIA

www.rabat.net



The most creative face of London, with a Spanish stamp

Greenwich in south-east London is becoming the new creative focus of the British capital thanks to the London Design District.

The complex is aiming to become the first permanent centre for 1,800 creative professionals. To achieve this it has worked in collaboration with eight international architecture studios, among which are the Spanish studios Barozzi Veiga and Selgascano.



1. A four-storey multi-purpose building by the Barcelona studio Barozzi Veiga, with polished aluminium façade.
2. Selgascano has designed the B1 building of the Design District, where vivid colours and vegetation play a prominent role.
3. Caterpillar-shaped canteen with transparent structure designed by the Madrid studio Selgascano.

SpY 'eclipses' Logroño railway station

The urban artist SpY has devised the installation *Blackout*, a huge black sphere 15 metres in diameter located in the central oculus of Logroño railway station. The installation, presented during the Logroño International Festival of Architecture and Design, "Concéntrico 07", alludes to the concept of monitoring, seeing, and being observed, in addition to the implicit consequences that this generates in an era of remote surveillance. A state of digital control that parameterises our existence and is gradually changing the way we humans relate to each other.



Photos: Dan Bradica / Nacho Sánchez

The most sought after, Javier Calleja

The works of the Malaga artist Javier Calleja are causing a sensation in Asia and the United States. His characters, large-eyed boys who have just overcome something painful and are about to smile again after their tears, are part of his trademark and a global attraction that has exceeded one million euros in the art market.



KRION SHELL

Sustainable sanitaryware of mineral origin with at least 5% of recycled plastics



KRION
PORCELANOSA Grupo

krion.com

Krion Shell: Natural worktop grafito 80 cm · Natural bathroom unit Roble Mediterráneo 80 cm
Wall: Verbier Dark 120 cm x 120 cm · Floor: Verbier Dark 80 cm x 80 cm

teamwork **TAMARA FALCÓ & Gamadecor**

The best moments, in the kitchen

With her brand new diploma from the prestigious **Le Cordon Bleu International Culinary School**, Tamara Falcó has arrived at the Gamadecor kitchens to prepare recipes that will take us through the year.



Tamara feels at ease and keeps smiling when faced with the culinary challenge. She has just published her book "Las recetas de casa de mi madre" (The recipes from my mother's house), which is on the way to becoming a best seller, and she enters our kitchens ready to prepare a series of iconic recipes to celebrate the most important holidays with us.

Her approach to cooking is nourished by her personal history, in which family gatherings around the table have brought reunions and joy.

When she decided to embark on formal

training, she chose Le Cordon Bleu, possibly the most prestigious haute cuisine school in the world, which has earned her a diploma that opens the doors of international cuisine.

Today in the **PORCELANOSA Group**, she tells us about her experience.

Tamara, how did you like working in the Gamadecor kitchens?

I loved them. They are a perfect combination of functionality and aesthetics, two very important values for me. Their original avant-garde designs are characterised by architectural beauty and full utilisation of space. Pull-out drawers, infinite work



During her work at the **PORCELANOSA Group**, Tamara took the opportunity to learn the most avant-garde techniques. The kitchen on this page and on the left is the model **Residence R3.70 Blanco Snow / R1.70 Etimoe Ice** by Gamadecor.

surfaces, folding furniture, spacious display cabinets... Their extensive knowledge provides a design that is tailored to the needs of each person, whether chef or enthusiast.

How have you found these days, working at the PORCELANOSA Group?

I really liked being able to learn about the production process from the factory. It's like a real laboratory, it's impressive! Everyone who works here is lovely and I felt very at home during my visit.

What are the technical advantages of these kitchens for you?

Their functional use of space, the compact sintered mineral **XTONE**, which withstands high temperatures, the Ghost finish that facilitates cleaning, are some of the advantages.

Can you give me your opinion on the XTONE ceramic work surfaces?

Its polished and delicate appearance is the perfect setting for any preparation, since it can withstand all kinds of temperatures, even direct from fire. In addition, they are antibacterial and have an infinite range of shades.



“ I really liked being able to learn about the production process from the factory. It's like a real laboratory, it's impressive!”



Tamara in action.
Above: kitchen model Emotions E6.70 Nogal Seda / E5.70 Bottle Brillo.
On the right, kitchen model Residence R4.70 Gris Hook Brillo / Eucalyptus Gray.
Facing page: Tamara poses with her book, which is already a bestseller.
The kitchen is the model Residence R1.90 Nogal Moon / R1.00 Cool. All models are by Gamadecor.

Tamara shows training, talent, sympathy and intuition, values that today she brings to the **Gamadecor** kitchens, centre of operations of this new job.

She moves with ease among the most innovative kitchens, at the forefront of the most exclusive design. Kitchens that combine aesthetics and functionality, in

which she has prepared creations that define her. Recipes with soul for special times of the year that invite celebration and shared moments.

Today, Tamara offers us her vision of cooking and of working life, with her eternal smile, in the most beautiful, avant-garde and sophisticated kitchens.

The PORCELANOSA Group



CERSAIE

a fair of new products

An unwavering commitment to technological innovation and research in recent years has ensured that the companies in the **PORCELANOSA Group** have been able to play a prominent role in this great ceramics and interior design event. Many new products were presented in Bologna, characterised by large ceramic formats, designs with more realistic and natural textures, and industrialised solutions for both residential projects and commercial contracts.



The new product offerings from **Porcelanosa** put the focus on materials such as stone, metal and terracotta, and elevate them to a new dimension. These are versatile and elegant tiles, for walls and floors, that include technical advances and sophisticated decorations. Inspired by the contrasts between the earth and its forms created by geological processes (volcanic stones, cement...), the **Treviso** and **Cotto** collections bring strength and durability to exteriors. Others, like **Treccia** and **Hannover**, advocate neutrality, while **Vetri** surrenders to the boldness of colour.



- 1 Terracotta is redefined with the new Cotto Colonial collection, offering a more realistic, resistant and versatile flooring, designed to equip outdoor spaces with character and strength.
- 2 The wall tiles of the new Treccia Natural collection are inspired by nature and rich in nuances, they convey warmth and comfort.
- 3 The freshness of colour is embodied in the collection Brick Vetri Blu. These ceramic wall tiles create casual and cheerful interiors.



In its desire to continue innovating, **Gamadecor** presents a new line of modern high-quality sofas with removable, reversible frames and removable covers, which guarantee maximum functionality and versatility. For the bathroom, surprise with the **Play** range, which incorporates two drawers to achieve an even more practical piece of furniture. And emphasise the beauty of the kitchen with the collection **E6.90 Roble Torrefacto**, an option replete with practical details and carefully selected materials.



Natural is the new range of vanity surfaces made of the material **Krion Shell**®, bringing an experience for the senses due to its **Rock** texture. Available in a range of formats, colours and thicknesses, it can be combined with furniture from the same **Natural** range in the finishes **Nogal Origin** and **Roble Mediterráneo**. New highlights for the domestic environment, and also for commercial contracts, include **KRION**® **Lux** in the finish **Hickory**, inspired by ebony, and **Fitwall**® **Palm Caribbean**, with a multitude of decorative combinations that can be integrated into spaces to bring an extra unique dimension of innovation.



1 Straight lines, a wide palette of neutral colours and avant-garde designs define the new line of sofas from Gamadecor, offering great comfort and durability. Thanks to its reversible characteristics, it allows personalised compositions according to the needs of each space.
2 Bathroom furniture **Play**, in the finishes **Roble Polvo** and **Liem Grey**, with **XTONE** washbasin either suspended or simulating a pedestal. The auxiliary modules can also be suspended or delivered with legs, allowing a wide variety of options when configuring the furniture.
3 Kitchen furniture **E6.90 Roble Torrefacto**, made with high quality materials and functional details such as the sliding top with oblique opening, perfect for transforming a work surface into a high table.



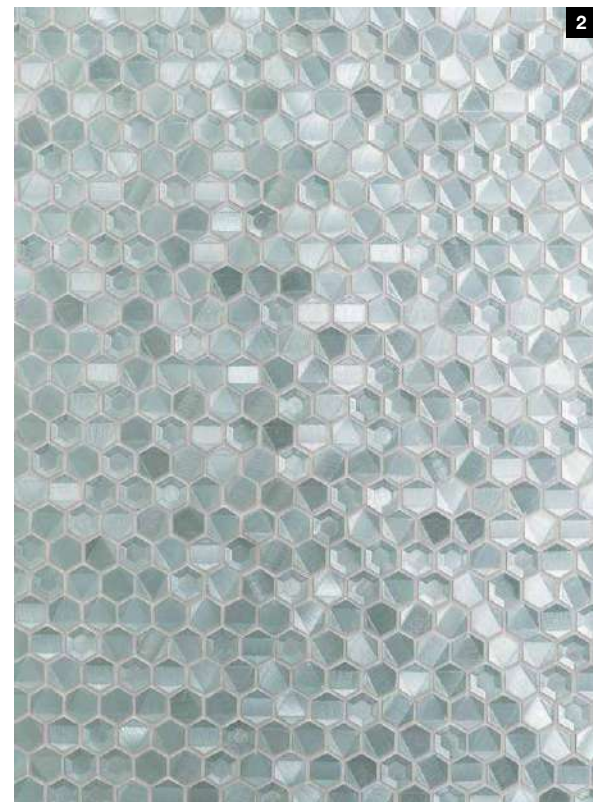
1 Living room fitted with the decorative panel **Fitwall**® **Palm Caribbean**. A very versatile solution that adds personality to the room through its braided shapes.
2 Bathroom fitted with **Natural** vanity surface in the colour graphite, with integrated **Krion Shell**® washbasin, with at least 5% recycled material in its composition. The suspended unit is from the collection **Natural** in **Roble Mediterráneo**.
3 With a finish inspired by ebony, the range **L507 Hickory** by **KRION**® **Lux** brings greater functionality and integration to the market for construction materials.

L'Antic Colonial

The colours and textures of nature are the source of inspiration for the organic design that **L'Antic Colonial** offers through stones and natural woods, wallpaper and mosaics in a range of materials. Of note among this season's new offerings are the pieces of high quality natural stone, as well as mosaics in this same material and in metal. Raw materials that, combined with other elements such as natural wood, create a modern and welcoming atmosphere. Unique and comfortable contemporary spaces.



1 Front wall of living room featuring the wallpaper **Skins Clarence Coal**.
Natural wood flooring **Classic 1L Herringbone Camel** brings a great feeling of warmth and elegance.
2 Detail of the hexagonal metallic mosaic **Gravity Aluminium Sides Aquamarine**. Its metallic glimmers bring freshness and dynamism.
3 Wall finished in earth tones using the natural stone mosaic **Lines Boll Aston Pulido**.



XTONE

The **XTONE** large-format compact sintered mineral slabs are inspired by marble to dress interiors and bring solemnity and character. The richness of their designs, formats and finishes provide groundbreaking and technically advanced functional solutions. **Emerald Green, Marquina Black** and **Invisible White** are some of the new collections, which radiate intensity on all types of surfaces. A solution whose sophistication is taken to the highest level with the natural stone **Altissima**, offering the most advanced technical features and a personalised service.



1 Large format flooring, wall finishes and stairs dressed in **Invisible White Nature**, bringing majesty to the spaces.
2 Inspired by marble, the finish **Marquina Black Polished** creates environments with great personality and sophistication.
3 Green tones colour the front wall of this bathroom thanks to the compact **Emerald Green Polished**, which has been combined with the shower and washbasins finished in **Marquina Black Polished**.





Avant-garde design and sustainability characterise the **Oxo** collection, used to dress the bathroom with innovation and functionality based on a design using pure and angular lines. Meticulously designed to promote ecological awareness, it has cold opening, temperature control and a water consumption limiter. The **Lignage** taps elevate the elegance of their form with a new brushed gold finish. **Noken** selected new colours for the bathroom such as the **Forest** finish for the **Lounge** furniture.



Industrialised construction makes headway in the **PORCELANOSA Group** through the **Monobath** bathrooms by **Butech**. An integrated solution, part of **PORCELANOSA Offsite**, that combines the company's quality finishes with the advantages of mass production of fully prepared modular bathrooms. Added to this are the benefits of sustainability and energy efficiency provided by the various materials and techniques that shape these construction solutions.



1 The structure of the **Monobath** bathroom can be closed or, as in those supplied for the **Hotel Castillo de Peñíscola**, open for integration into the bedrooms.
 2 The **Monobath** presented at this year's **CERSAIE** incorporated a **Shower Deck** shower tray and electric underfloor heating regulated by the controller **10GM** by **Butech**. The walls are finished in **Linz Blanco** by **Porcelanosa**, combined with the profile **Pro-part Coal** by **Butech**. The floor is **HIGHKER® Bottega Acero**, by **Porcelanosa**.
 3 **Monobath** industrialised bathrooms can be used in all kinds of projects. They bring improved cost control and faster implementation, and produce less on-site waste.



1 Bathroom fitted with suspended furniture from the **Lounge** collection, presenting the new finish **Forest**. This is combined with the taps from the same collection and the free-standing bathtub **Finish Studio** which has a handcrafted effect, with a customised exterior and white interior.
 2 The mixer tap **Oxo** in titanium finish and **WaterForest** sustainable design.
 3 The taps are **Lignage**, designed by **Ramón Esteve**, with a new brushed gold finish.





state-of-the-art technology

Solidker

Creation without limits

Solidker is the new **Porcelanosa** brand, designed for the most demanding spaces, with its high technical performance, its rigorous quality control and its multiple finishes.

Flooring in Stratos Trento Grey 120 cm x 120 cm by Solidker, technical porcelain with great advantages such as its high resistance, inalterability and multiple applications.

THE PORCELANOSA Group makes a large investment every year, both in terms of money and people, to the development of new technologies and the implementation of innovative actions in our production processes, with the aim of offering a product with high technical performance.

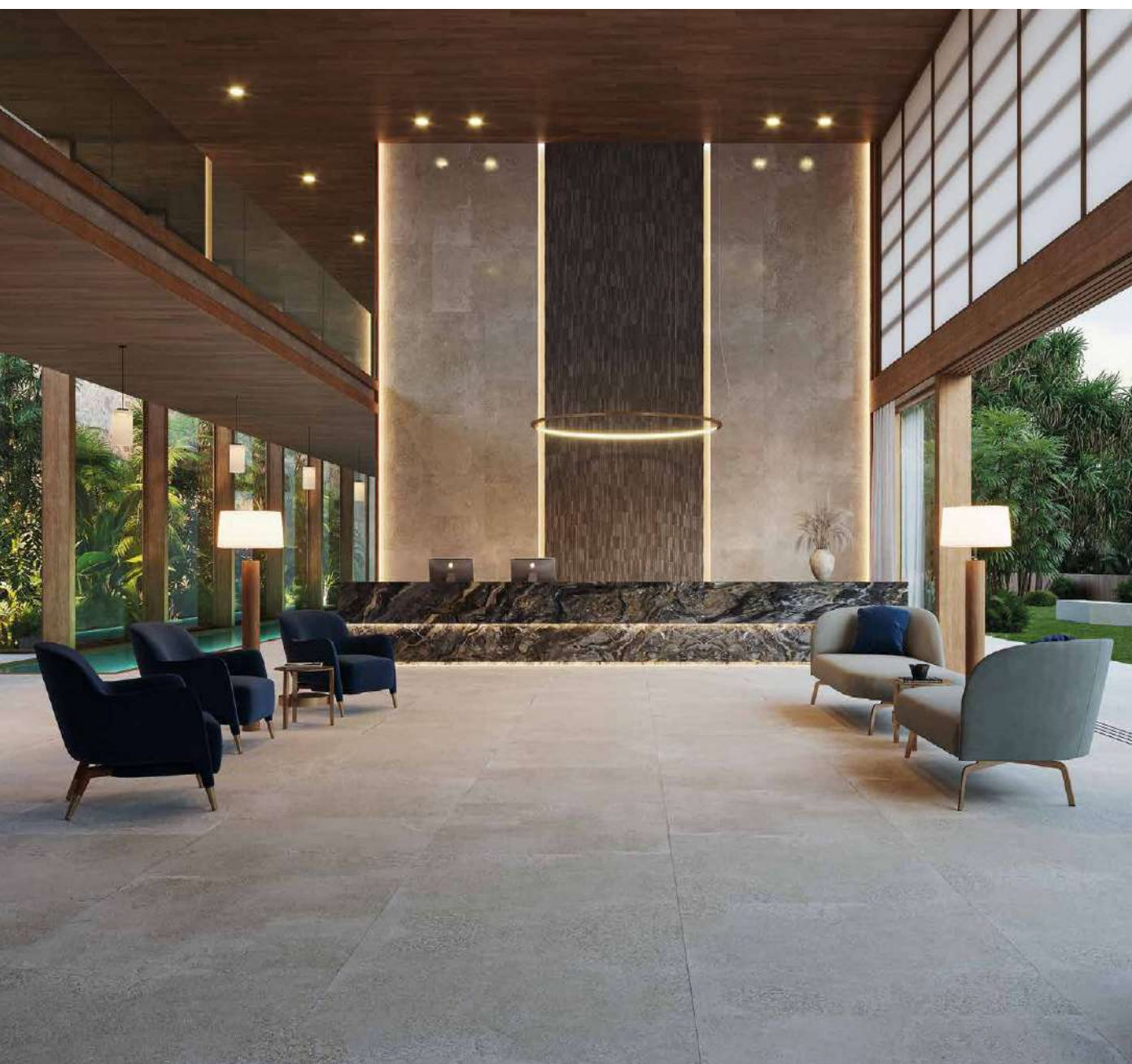
One result of this investment is Solidker, the multinational's new brand that brings together all its technical porcelain models. Thanks to the purchase of new machinery, the use of technology, and the combination of different raw materials, this material has an added value: its *full body* or all-mass composition. The body and surface of the piece follow the same pattern, since all layers have an identical graphic and image.

state-of-the-art technology

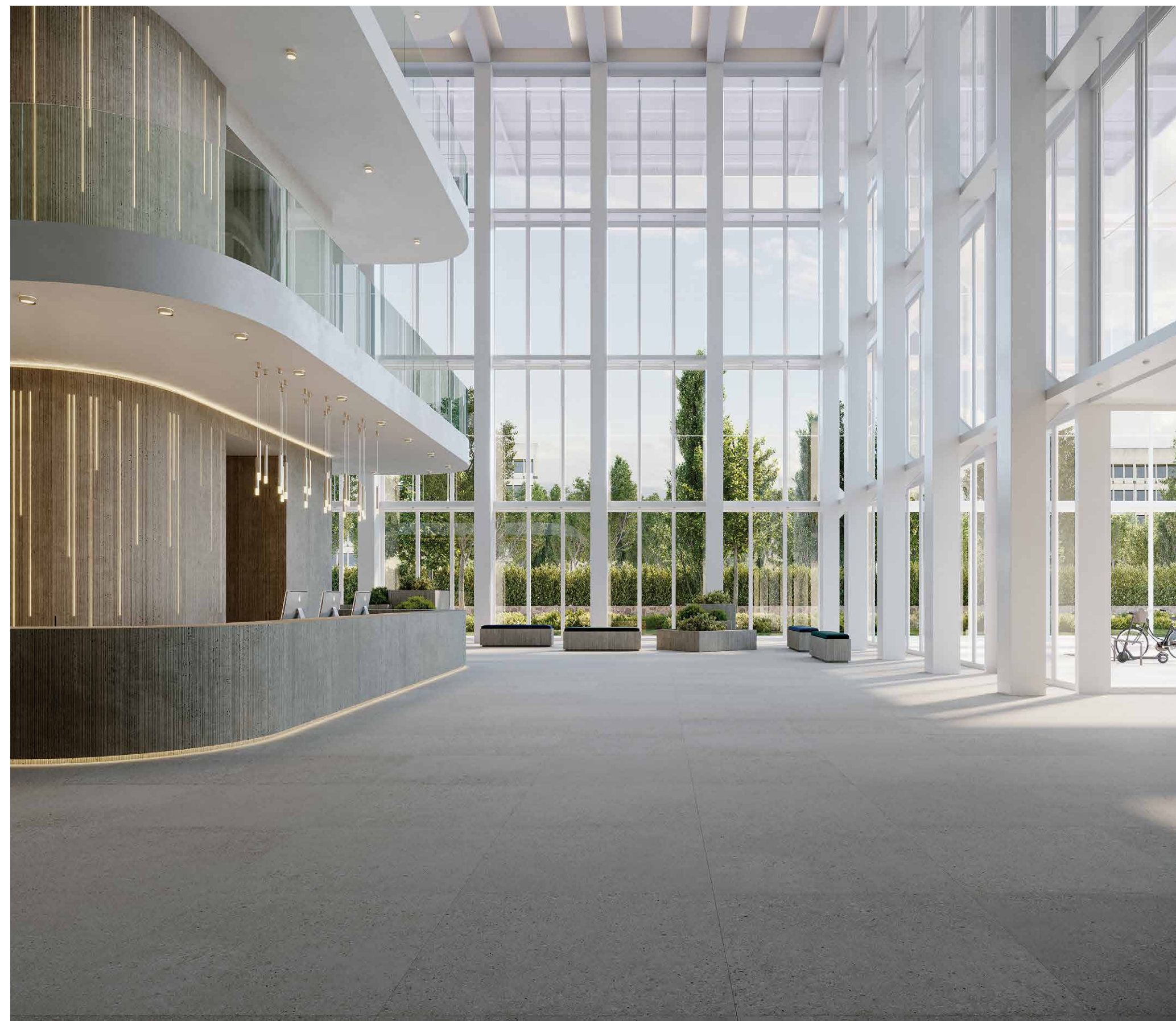
This ceramic richness is further enhanced in the new product line **Stratos** by **Solidker**; its collections are made using small scales together with fragments of various sizes and shades that penetrate the interior of the piece, promoting compact and ultra-resistant surfaces for the design of very long-life projects.

It should be highlighted that technical porcelain shows exclusive advantages such as its extremely high resistance to heavy traffic, its inalterability in adverse conditions and its multiple applications, from public spaces to transport hubs or educational centres.

In addition, thanks to the innovative production techniques with which **Porcelanosa** works, the *full body* porcelain technique can be applied to any type of finish (cement, stone...) and different modular formats to design uniform environments where the wall finishes and flooring display absolute continuity.



Left: flooring in Stratos
Dijon Sand 120 cm x
120 cm by Solidker.
Above: flooring in
Stratos Gallery Sand
120 cm x 120 cm by
Solidker.



An innovative product with
the maximum guarantees
for infinite projects

SOLID:
With a very sophisticated design, true modularity and high technical performance, the **SOLID** range offers a unique feature: its all-mass composition. That is, both the surface and the body of the piece are composed of the same raw material, thus providing uniformity and aesthetic security to spaces.

STRATOS:
This new exclusive product line offers multiple formats and different finishes with an added benefit: scales. Fragments are added to the all-mass raw material of Solidker, distributed evenly throughout the tile to achieve the same image in all its layers.

profile **MASSIMO ROJ**

“Materials are a vast field for continuous experimentation and innovation.”

With each new building, the Italian architect Massimo Roj opens up new fields of experimentation with one clear objective: to satisfy the needs of the people who will occupy it. Together with the multidisciplinary team that makes up Progetto CMR, he does this with an added focus on innovation and sustainability.

Text: TXELL MORENO Portrait photo: PROGETTO CMR

Since he started as an architect in 1982, Massimo Roj has created projects which offer new solutions and aim to redefine urban environments in line with the changing needs of each society. After passing through various studios, in 1993 he founded the Progetto CMR studio in Milan together with the architects Corrado Caruso and Antonella Mantica. Over the years, this has become a multidisciplinary team present in nine countries. Today, he heads a large company that develops and combines a range of competencies based on a comprehensive service that responds to increasingly cross-sectoral interests. “There is no routine in our business. Each project is truly a journey in itself, testing us and broadening our experience. Teamwork is the heart of our work. We find it stimulating to collaborate with different people and skills, since it allows us to constantly improve ourselves in all areas and on the most diverse scales, from furniture design to the masterplan of a city.”



A combination of technology, design and local urban identity characterises Huawei's new Milan headquarters, the work of Progetto CMR. Its organic forms stand out. The walls, with futuristic lines, are finished in Krypton® Solid Surface.
Photos: Paolo Riolzi.

When Massimo Roj takes stock, he recognises notable differences in the way spaces are designed. “It has changed a lot in terms of the tools that are making the forms of architecture evolve; this is the case with parametric design or BIM. But, on the other hand, the needs of those who want to live in high-quality, versatile and comfortable spaces remain unchanged.” In this evolution, the concept of sustainability has come to the fore as an essential value. “I think there is a good awareness and diffusion of skills among designers, but there is still work to be done to develop aesthetic languages that find a new way to interpret an increasingly organic focus on reducing environmental impact and land use. The new frontier is a broader view of sustainability which, in addition to the energy efficiency of the buildings being constructed, takes into account respect for people and territories and the ethics of investments”, he says.

With extensive experience in the office sector and in functional projects and interiors, Progetto CMR has also translated this integrated approach to redefining services and spaces to

“Companies can teach us and help us in the search for ever more environmentally conscious solutions”



Flexible and contemporary spaces characterise the corporate design created for the consulting firm PwC in Rome. Krion® Solid Surface has been used for its versatile character, high resistance and quality.
Photos: Andrea Martiradonna.



In the Finzeta Centro Leoni project, open and bright spaces create a warm and sustainable work environment, in which the compact mineral Krion® has been used.
Photo: Progetto CMR.



football stadiums. “The main concern, whether for offices, homes or public places, must always be knowing how to interpret the needs of those who will inhabit those spaces”, he says. Offices, in particular, will continue to play a decisive role for companies that aim to bring people back to renovated spaces, responding to new needs. Our daily work confirms that space, if well designed, has the ability to bring out the latent potential of individuals and, in turn, must express an identity in order to build a community. And now, more than ever, we need to feel part of a community.”

On the subject of developments in architecture, the CEO of Progetto CMR acknowledges that he does not like to talk about trends but about an architecture which is more or less conscious: “Careful architecture continues to evolve to find appropriate answers to new demands. After the long pandemic, well-being and the comfort of the spaces that welcome us is increasingly relevant. So is the relationship with nature and the versatility of those homes or offices where we spend our time.” He believes that, in architecture, “we live in constant

transformation, changing roles and activities with an accelerated frequency and always with the need to find everything we need anywhere and at any time: spaces, technologies, services, but above all attention.”

All these solutions formulated by Massimo Roj and his team are implemented in an exhaustive and studied exercise of conceptualisation and development during each of the projects. For Roj, “materials are the words of a language that allow us to write a different story every time. They are a vast field for continual experimentation and innovation that require designers to carry out constant research and documentation. And in the field of sustainability, companies can teach us a lot, as well as helping designers in the search for ever more environmentally conscious solutions.”

With 2,800 projects behind them, one of the common denominators of Progetto CMR is “serving the people and the many companies that are part of our Group”, says Massimo Roj. “Our culture, in addition to being deeply linked to Italy, is polytechnic, always attentive to an evolution of technologies that never lose sight of the human side”, he concludes.

STOCKHOLM

The Dream Villa

The architect **Benjamín Calleja Westling** and his wife, the interior designer **Patricia Ramos**, have successfully transferred the light and essence of the Mediterranean to their wonderful home in Stockholm.

Text: PAOLA ROCCA Photos: MIA BORGELIN & NICOLAS BOTAS



On the previous double page and on this page:

The entire façade is in minimum thickness, large-format, natural slate Airstate Graphite by L'Antic Colonial. It has been affixed using the adhesive Politech Premium by Butech. The pool surround is in Bhutan Natural slate by L'Antic Colonial.

The pool has been waterproofed with Sylastic and has been coated with the polymer adhesive h-920 by Butech. The front cladding is the Bookmatch in XTONE Aria White Nature by Porcelanosa. The exterior terraces are paved in River Stone by Porcelanosa.



Left: Wall finished in XTONE Aria White Nature by Porcelanosa. Natural walnut wood flooring in Tortona 1L Walnut by L'Antic Colonial. As on the main façade, the ceiling is finished in Airstate Graphite by L'Antic Colonial.

Right: Stairs in the model Tortona with skirting boards and stair edgings by L'Antic Colonial. LED profiles on the floor, by Butech. Natural walnut wood flooring Tortona 1L Walnut by L'Antic Colonial.

The lower part of the staircase wall is vinyl with a textile look Linkfloor Contract Dark by L'Antic Colonial.

Below: Walls and floor finished in Orobico Dark Polished XTONE by Porcelanosa, natural wood flooring Tortona 1L Walnut by L'Antic Colonial. Butech LED profile built into the staircase.

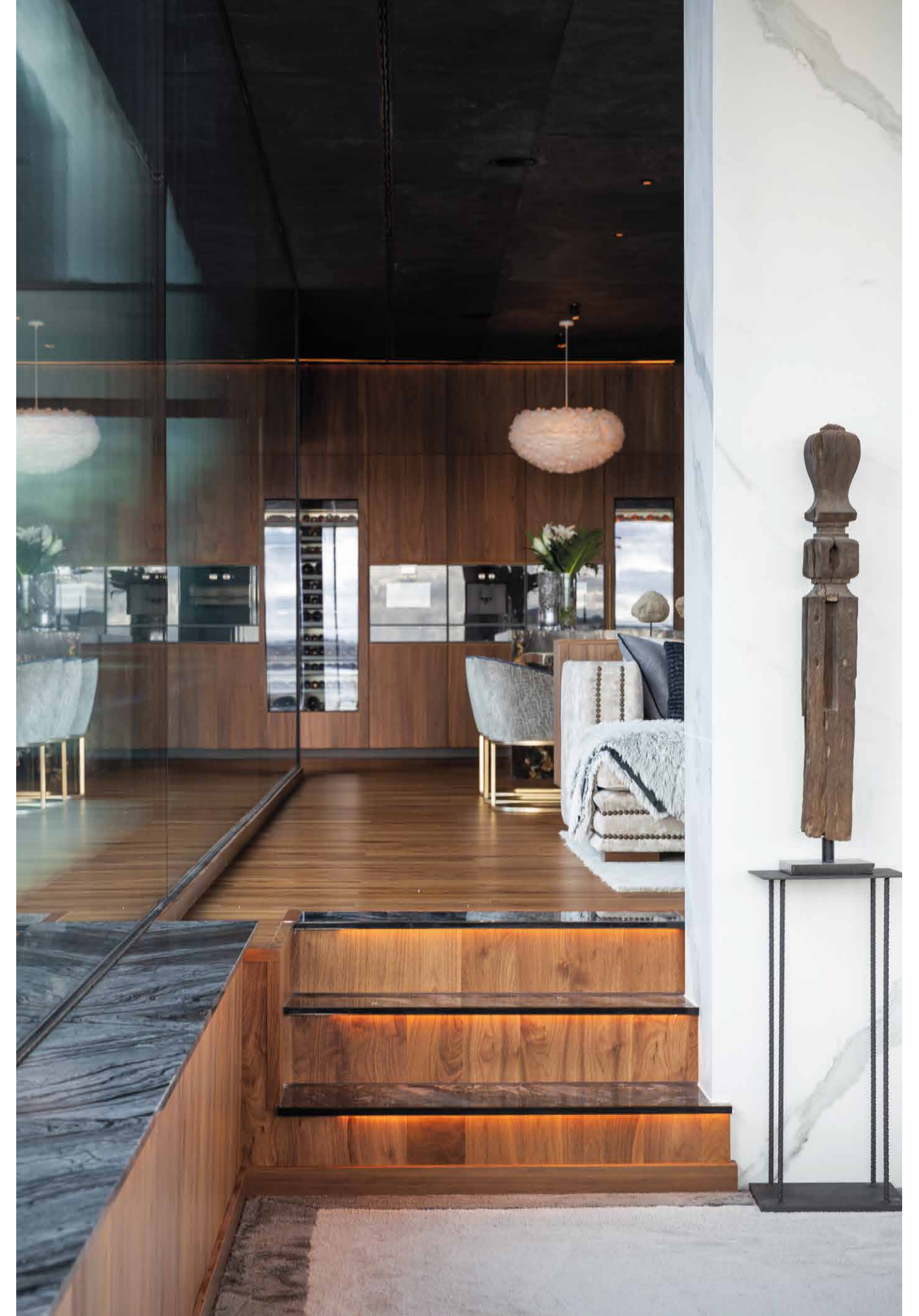
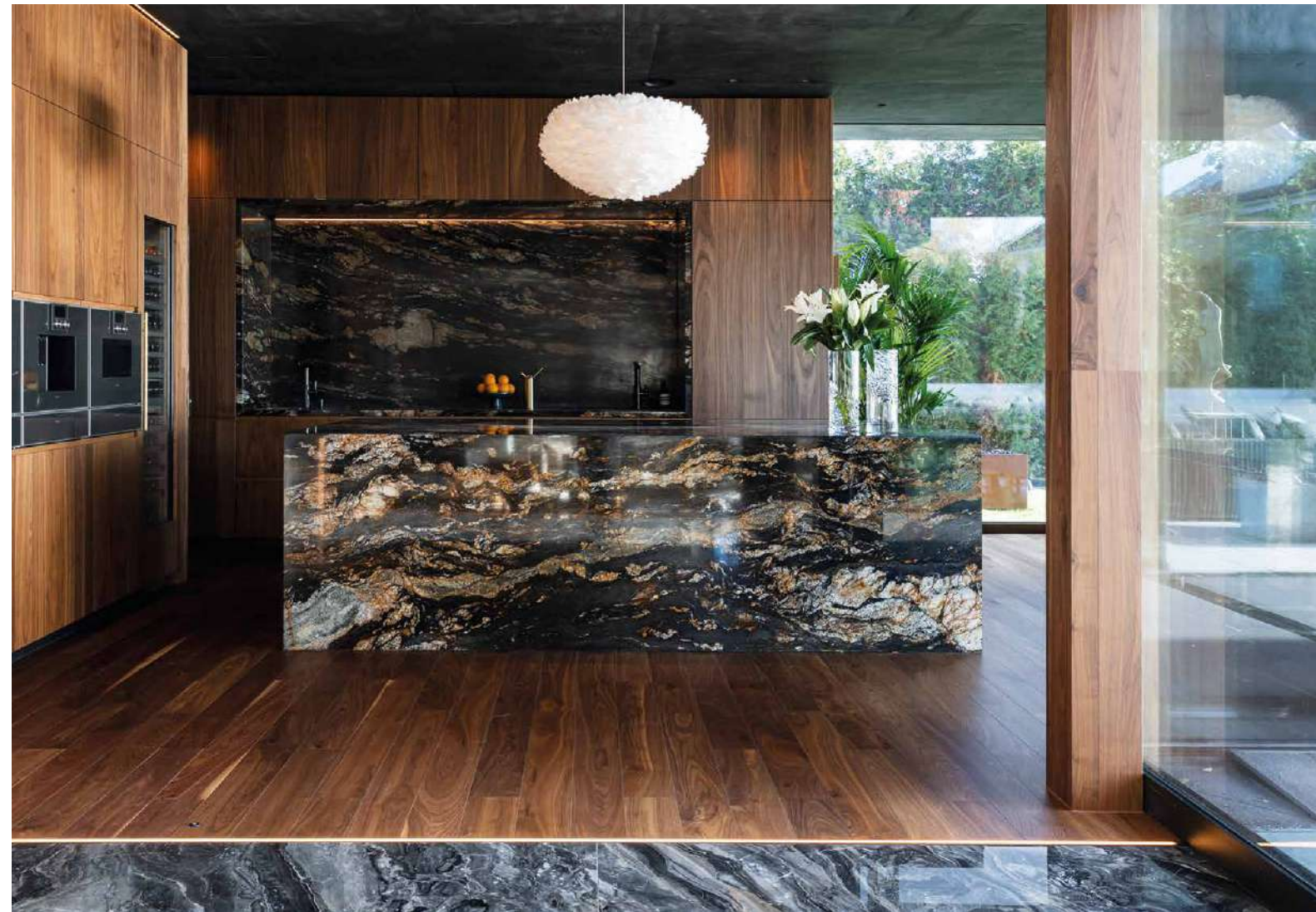


Benjamín Calleja Westling studied at a Swedish school in Madrid, completed higher education in Sweden and returned to Madrid to complete his training. As an architect, builder and developer, he combines a Renaissance personality with a marked practical spirit that has positioned him as an architect at the service of the company. From his studio, often working with his wife, he has created iconic projects, including many restaurants, hotels and residential buildings. In this case, Dream Villa, a beautiful house in Stockholm, completely designed and built by the couple to be their family home. "It is a project that my wife and I have worked on together. Down to the last detail. We wanted to create a project that would generate a home which is unique in the Scandinavian market, there is nothing like it here. We wanted to bring the Mediterranean culture of light and openness to a country like Sweden, where everything is traditionally more closed. The idea is to blur the boundaries between the sky, the sea and the

On this page:

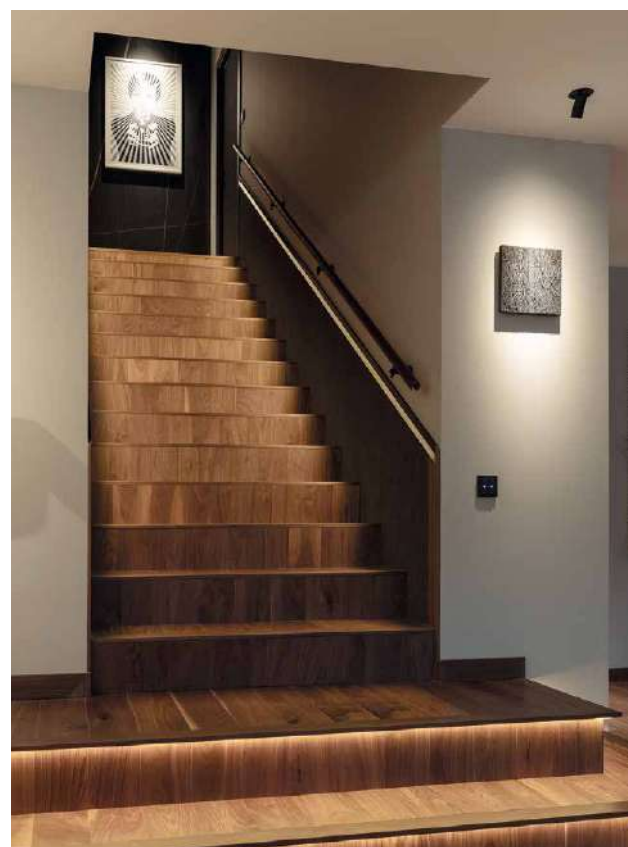
Parquet has been installed on all floors using Tortona 1L Walnut by L'Antic Colonial. The ceilings are finished in Airslate Graphite, also by L'Antic Colonial. Kitchen Emotions Nogal Seda and XTONE by Gamadecor. Mixer tap Bridge matte black by Noken. Floor profile, Pro-light Black by Butech. Kitchen walls, Paonazzo Biondo in silk finish by XTONE. The living room floor, opening out to the pool, is XTONE Orobico Dark Polished Aria White by Porcelanosa. Ceiling finished in Airslate Graphite by L'Antic Colonial. Outside, on the walkway, XTONE Stuc Black by Porcelanosa large-format pieces on pedestals by Butech.

Facing page: stair treads in XTONE Orobico Dark. Column faced in XTONE Aria White Polished by Porcelanosa.





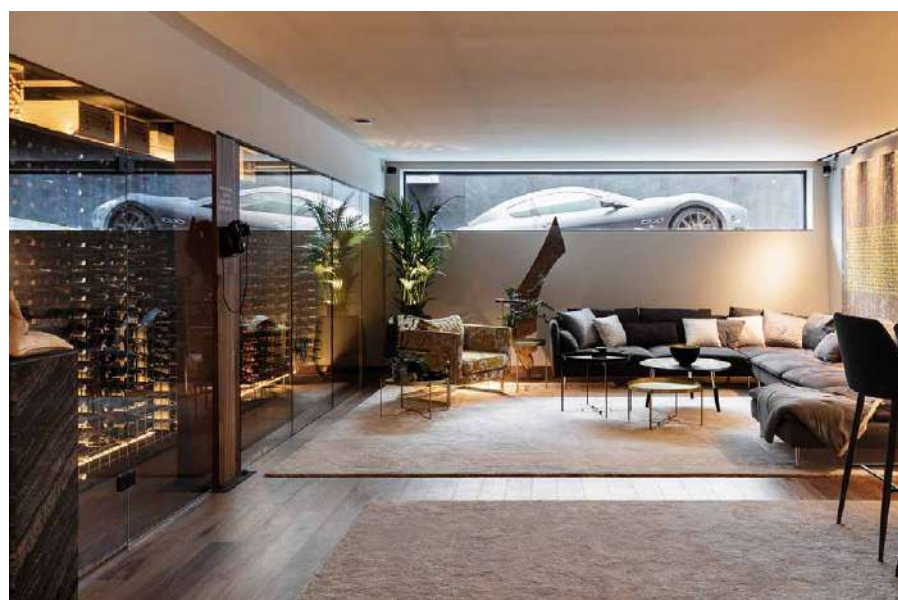
On this page, above:
Exterior wall finished in XTONE Calacatta Green Polished by Porcelanosa.
Right: Flooring and stairs in natural walnut wood Tortona 1L Walnut by L'Antic Colonial. The lower part of the staircase wall is vinyl with a textile look Linkfloor Contract Dark. The upper part of the staircase wall is finished in XTONE Nylo Noir Polished by Porcelanosa. LED profiles by Butech, both on the staircase walls and below the steps.
In the spa: the floor is in PAR-KER® Tanzania Nut by Porcelanosa, which was installed with the adhesive One-flex Premium and Colorstuk by Butech. Walls finished in XTONE Nylo Noir Polished by Porcelanosa and bathtub Lounge finished in One-flex Premium Black, and various bathroom accessories, all by Noken.
Below: In the wine cellar, the natural walnut wood flooring Tortona 1L Walnut by L'Antic Colonial is used again.



house.” The house seems to enter directly into the sea thanks to the wide walkway that leads to the jetty and the helipad. If we want to define luxury as the perception of the exquisite, we are in the perfect place. “We opened the whole ground floor to the sea with large floor-to-ceiling windows, but created privacy from the street with a large marble façade. Thus, the house is entirely turned towards the sky and the sea. Throughout the seasons, the light changes and the house looks like a ship. Here, again I emphasise the importance of leveraging the light, as we understand it in the Mediterranean.” The spectacular façade, garden area, swimming pool and jetty have been built entirely with materials by the **PORCELANOSA Group**. The interiors, which feature various living rooms, bedrooms, bathrooms, a kitchen, wine cellar, cinema and underground parking, have also been finished entirely using products from the Group's companies. “I have exclusively used materials by the **PORCELANOSA Group**. And the reason is that, in my opinion, it is the only company in the market that offers everything from floors to kitchens, façades, wardrobes and bathrooms. Absolutely all the materials. And this, as a promoter and as an architect, generates many tools and a lot of convenience when working.”

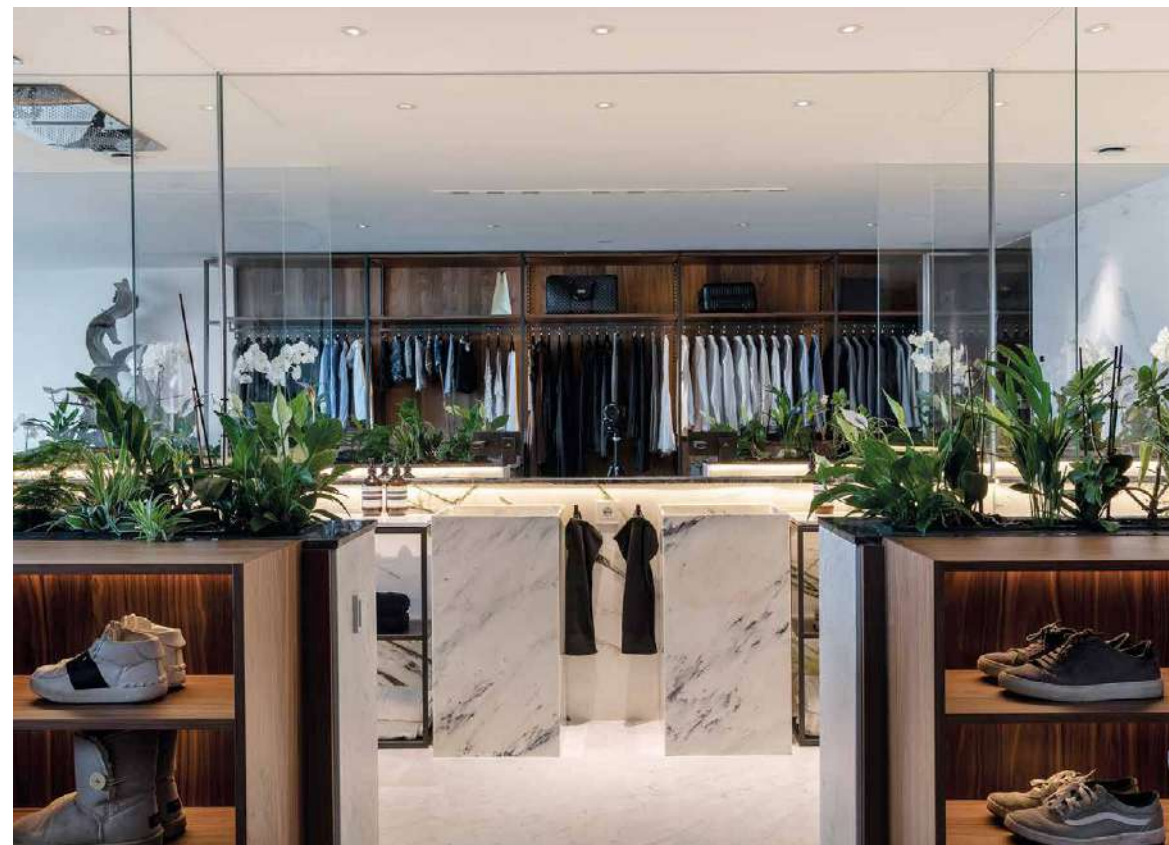


On this page, above:
Bathroom walls and floor in Durango Acero, by Porcelanosa.
Shower walls in XTONE Viola Rossé Polished by Porcelanosa.
Taps Round, brushed copper flush button, toilet Acro Compact in matte grey. All by Noken.
Elegant decorative profile Pro-Part Rose Line by Butech.
Left: walls finished in Airstate Graphite, large-format natural stone, light and easy to install, by L'Antic Colonial.
Taps Finish Studio matte black by Noken.
The wall finish was installed using Colorstuk Rapid black by Butech.



On this double page:

The spectacular bathroom that spans the entire master bedroom makes use of XTONE Calacatta Green Polished by Porcelanosa. The flooring is XTONE Carrara White Nature by Porcelanosa. The shower tray was made using the imperband rehabilitation kit and the linear grid Black by Butech. Suspended toilet Rless matte black, black towel rail Urban and black mixer taps Square, all by Noken. The walk-in wardrobe and shoe cabinet are in Emotions Nogal Seda by Gamadecor. In the bedroom area, bathtub Lounge Oval in matte black and black mixer tap Square, both by Noken. Wall finished in natural wood Tortona 1L Walnut by L'Antic Colonial. Pedestal with floral decoration in natural stone from the collection Altissima.



Dream Villa brings together luxury, elegance, privacy and technology. A challenge to which Benjamin Calleja Westling is no stranger, since he is one of the few professionals who can carry out a 360° project where everything is his responsibility. In this house, the interior design skills of Patricia Ramos also seek excellence down to the last detail, such as the design of the fittings, the crockery and the cutlery. "We have built this house for ourselves, and it is our sixth house, what happens is that someone always comes and falls in love with our houses and we have to build another. But it really is designed as a home for our family."

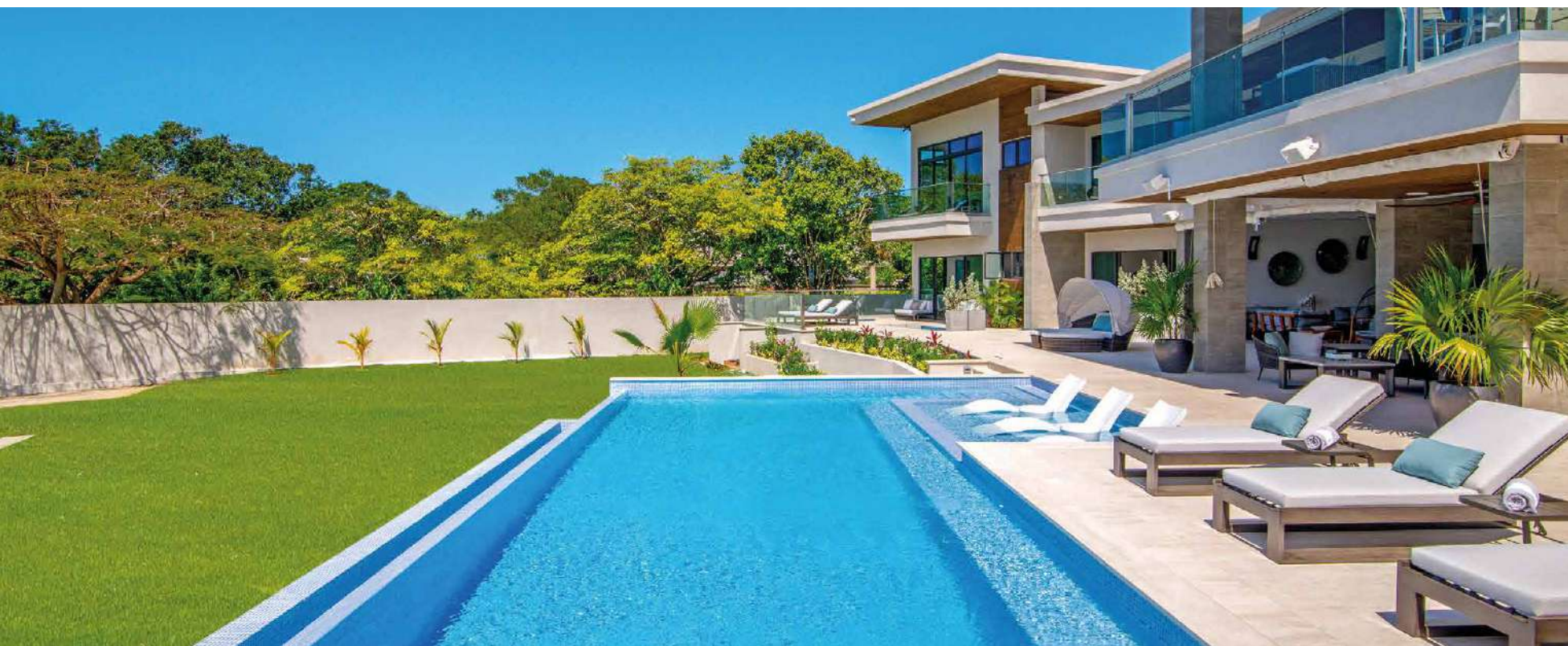


DISCOVERY BAY HARBOR JAMAICA

Happy Hour Villa, splendid tropical beauty

Facing the Caribbean Sea stands this exclusive villa, to which the materials of the **PORCELANOSA Group** bring elegance and serenity. A unique Eden where avant-garde and local art merge.

Text: TXELL MORENO Photos: NIGEL LORD



The villa, arranged on two levels, reserves the upper floor for the bedrooms, bathrooms, a games room, an entertainment room and the spa area. On the ground floor, the spectacular swimming pool that surrounds and envelops the structure of the house accentuates the architectural ingenuity. All the large-format flooring has been made possible thanks to the use of Nantes Caliza by Porcelanosa, combining different sizes to define and structure the spaces. Outside, a garden area with grass lawn leads from the pool to the private beach and a panoramic viewpoint. The exterior façade of the villa has been finished in porcelain material by Porcelanosa.



The main hall, in double height with an internal staircase, connects interior and exterior spaces. All the floors have been finished using the range Nantes, by HIGHKER®, Porcelanosa. These are large-format pieces in beige and earth colours that bring great luminosity and durability to the environments. The outdoor bar, connected to the swimming pool, finished in materials by Porcelanosa. The front of the bar has been finished in Gravity Aluminium 3D Hexagon Metal by L'Antic Colonial. The pool flooring is Nantes by Porcelanosa.



Located in a privileged enclave of the Jamaican town of Discovery Bay, Happy Hour Villa stands facing the Caribbean coast with a restrained and contemporary style. With a surface area of more than 1,200 m² the villa lies in an idyllic setting, which includes its own private white sand beach and a beautiful cove for swimming, snorkelling, paddle boarding or kayaking. Surrounded by crystal clear waters, dense tropical vegetation and high glass enclosures, the approach to the villa is a true evocation for the senses. Once past the imposing entrance door, the interior is warm and welcoming, dominated by open spaces where you can enjoy your free time in a relaxed way, with every detail taken care of.

This exclusive villa has 5 bedrooms and 2 suites, all with spectacular panoramic views that embrace



the environment, and have modern and functional equipment, giving quality and personality to the space. Happy Hour Villa successfully mixes avant-garde and sophisticated pieces with locally made furniture. All this washed in warm and subtle tones that evoke serenity and elegance. The house also has a spacious living-dining room that opens onto a large veranda looking out over the sea. Outside, there is a large infinity pool surrounded by a garden area, perfect for children's games or for enjoying a cocktail watching the sea from the sun loungers. Next to the pool, there is a large heated jacuzzi with views of the Caribbean.

The resulting project is a spectacular villa created by Synergy Design Studio and designed by Island Art & Framing. Avant-garde architecture that respects the tropical essence and, thanks to the high quality of the materials from the **PORCELANOSA Group**, makes Villa Happy Hour a private Eden in Jamaica.



The bedrooms on the ground floor have a private terrace from which you can access the main living areas. The flooring is Rodano by Porcelanosa. The bathrooms enhance the environment with floor tiles in earth tones from the ranges Harlem, Nantes and Newport, all by HIGHKER®. The decorative ceramic tiles are from the range Lexington, by Porcelanosa.

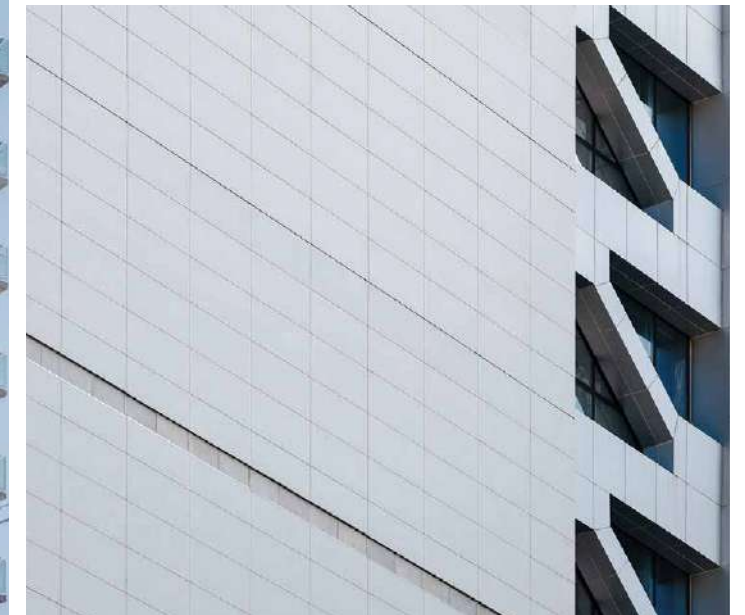
Left: highlights in this bathroom include the ceramic tiling that resembles wood slats using Lexington Cognac by Porcelanosa. The flooring is Rodano Caliza.

Combining the avant-garde with sustainability

Futuristic airs, optimum energy efficiency and great versatility characterise these original designs, which have found their best design allies in the technology and products of the **PORCELANOSA Group**.

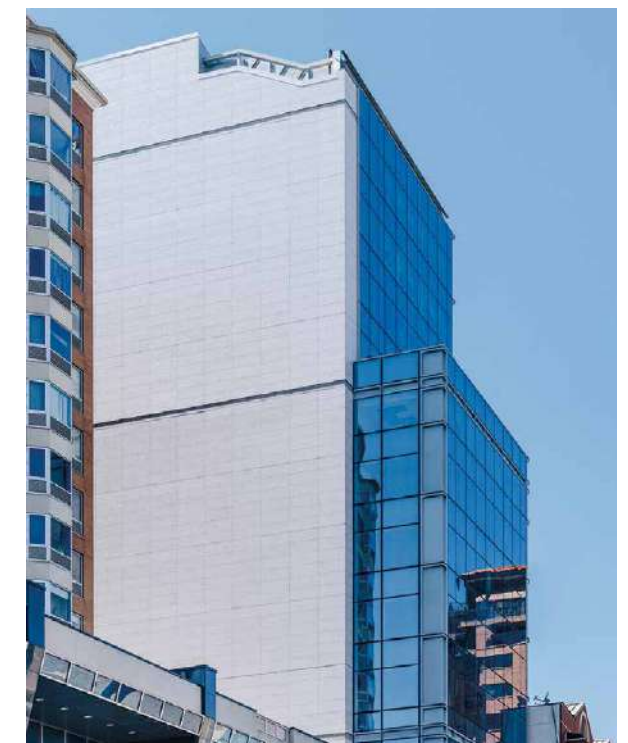


The monochromatic cladding of the ventilated porcelain façade is made up of large-format pieces of three models: Ferroker Niquel, Extreme White by STON-KER® and Deep Light by Solidker. The side wall in Ferroker Niquel porcelain stands out against the existing brick building.
Photos: Imagen Subliminal



TANGRAM New York (USA)

The North American studio Margulies Hoelzli Architects has designed Tangram House South, a building with 192 apartments spread over twelve floors located in the Flushing neighbourhood of Queens. The construction, inspired by the clean and elegant lines of the traditional Chinese "tangram" puzzle, has a ventilated façade with a monochromatic appearance, made up of three different designs of large-format porcelain panels in **STON-KER®** and **Solidker** by **Porcelanosa**, which in turn blend into the base of the attached brick building and the many glass windows and balconies that open to flood the interior with natural light. The building is part of the new and exclusive Tangram urbanisation, which has a timeless, balanced design. There are two residential buildings, a hotel, a commercial area, a cinema, commercial offices and a garden.

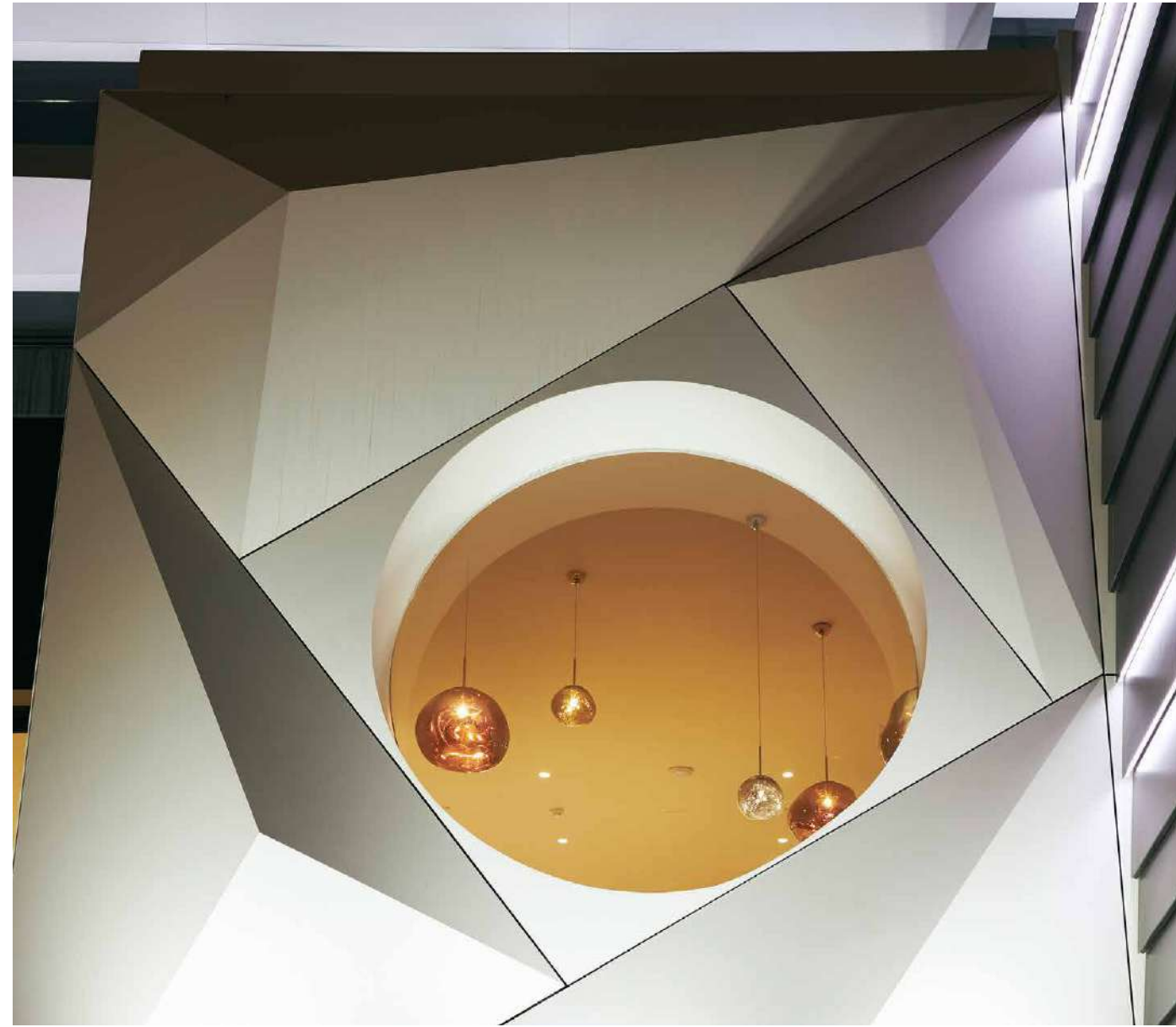


façades

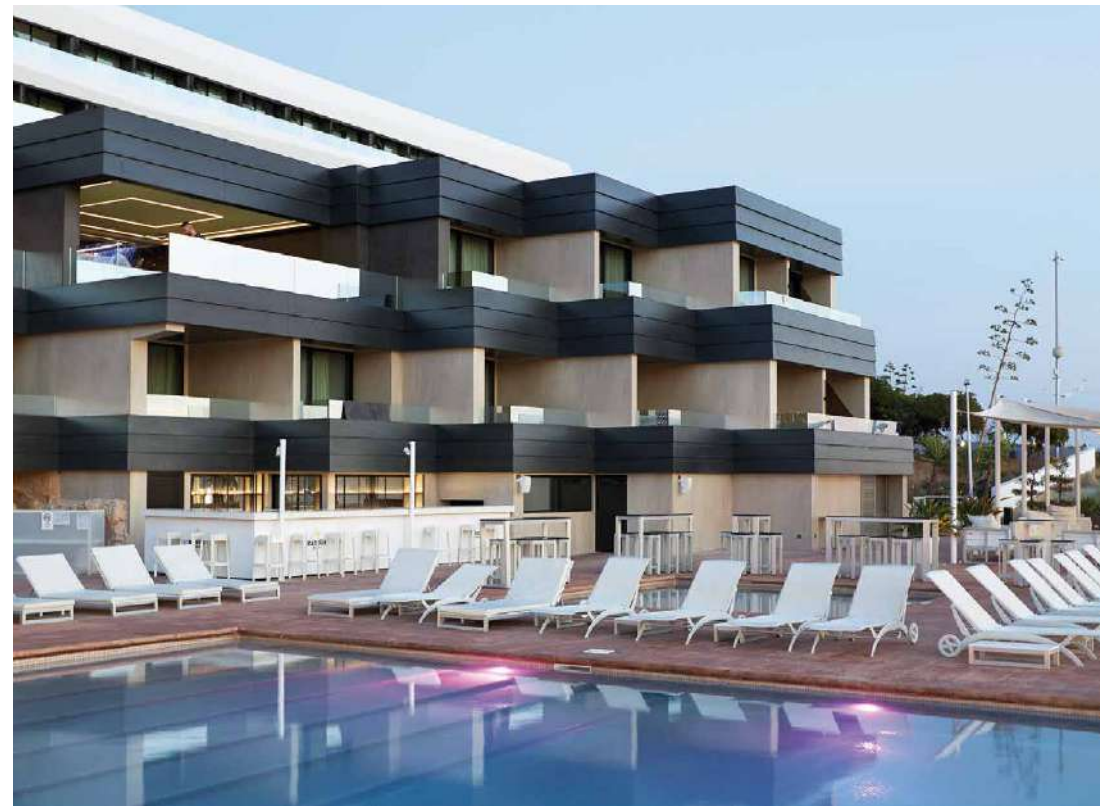


IBIZA CORSO HOTEL & SPA Ibiza (Spain)

The architect José María García Sánchez and Yedra Interiorismo are responsible for this project to renovate the main façade and sides of the hotel, originally from the 1970s, which lies opposite Marina Botafoch. A futuristic air characterises this ventilation façade with superimposed asymmetric lines, designed using the compact mineral **Krion®**, the ultra-fine compact sintered material **XLight**, by **XTONE** and the very highest performance ventilated façade system by **Butech**. The high mineral composition, installation, resistance and almost zero porosity provided by **KRION® Lux** enhance the building's energy efficiency, making it an avant-garde and sustainable project. The original combination of black and white on the overhangs adds elegance and depth to a design which is finished off with glass balustrades and natural wood floors.



The ventilated façade created using the extra-fine large-format compact sintered mineral **XLight** by **XTONE** is combined with **KRION® Lux 1100 K Life**. All this in a dominant white that contrasts with the black of the ultra-thin large format range **Concrete Black Nature**, also in **XLight** by **XTONE**. The large balconies, created using modules of custom-made **KRION® Lux**, hidden anchors and the ventilated façade **FV XLight** are by **Butech**. The mounting rails are made of aluminium, which offers high strength and durability even in the harshest environments.
Photos: Álex del Río.



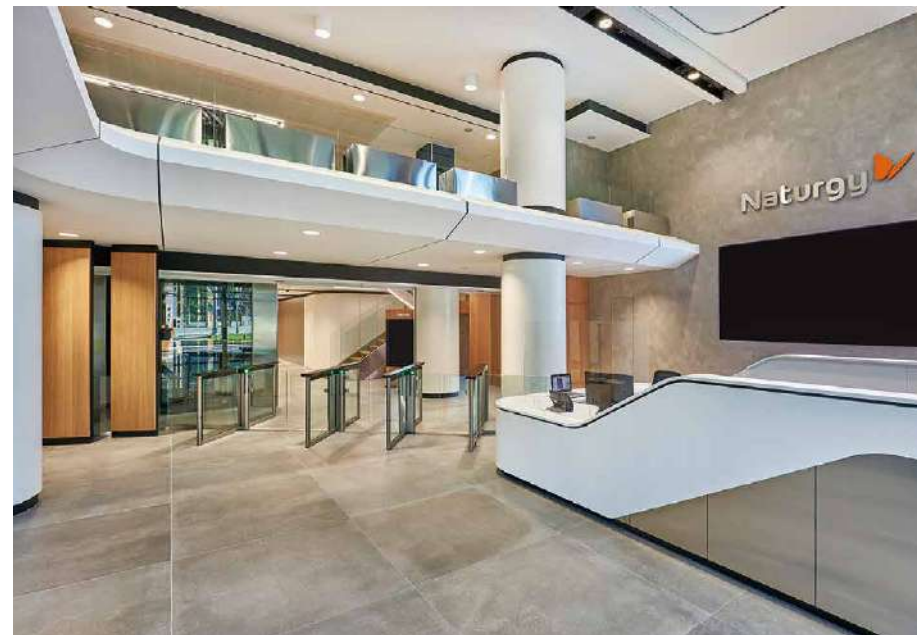


DIAGONAL 525

Barcelona (Spain)

The architect Sergio Sanz Pont of the studio Sanzpont Arquitectura has been responsible for the renovation of this central corporate headquarters that incorporates an innovative main façade, composed of large windows that provide natural light to the interior, and is defined by undulating edges created using **KRION® Lux**. Each of its component modules is installed using the construction system **K-Fix**, fixed to two continuous steel rails which in turn have been attached to the building. Thanks to the properties of **KRION® Lux 1100 K Life** and its very low levels of volatile organic compounds, the façade contributes to improving air quality.

In addition, the design of the south façade incorporates a treatment of photovoltaic slats, which, in addition to providing protection from the sun in the warmer months of the year, generate clean energy to reduce electricity consumption.



The main façade features undulating edges, made from **Krion®**, that provide a distinctive look, efficiency and sustainability. The sequence of aerodynamic lines provides an image of movement and modernity in which the incorporation of **Butech** has been key to the constructive solidity of the whole. *Left: large format flooring in Bottega Acero using fixing materials by Butech that ensure stability in the face of continuous traffic. In the bathrooms, the taps are Hotels by Noken with Acro u-bend and Urban washbasin.*
Photos: Dani Rovira.

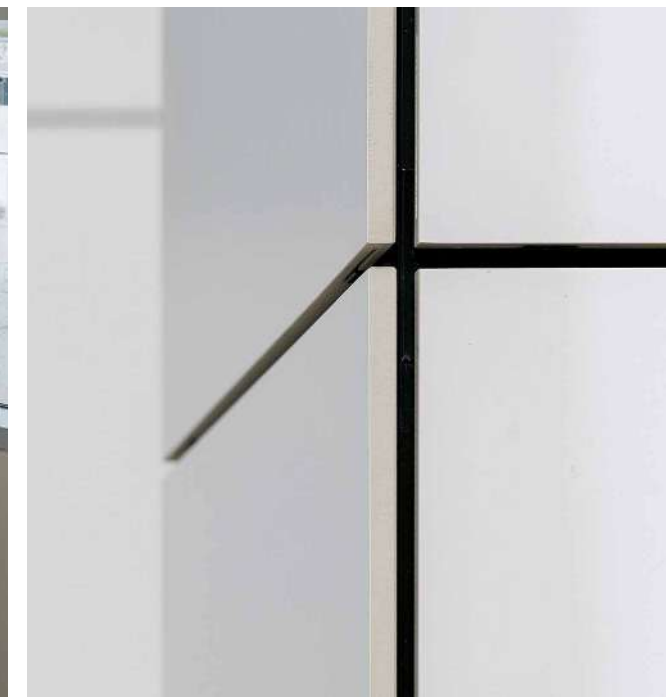
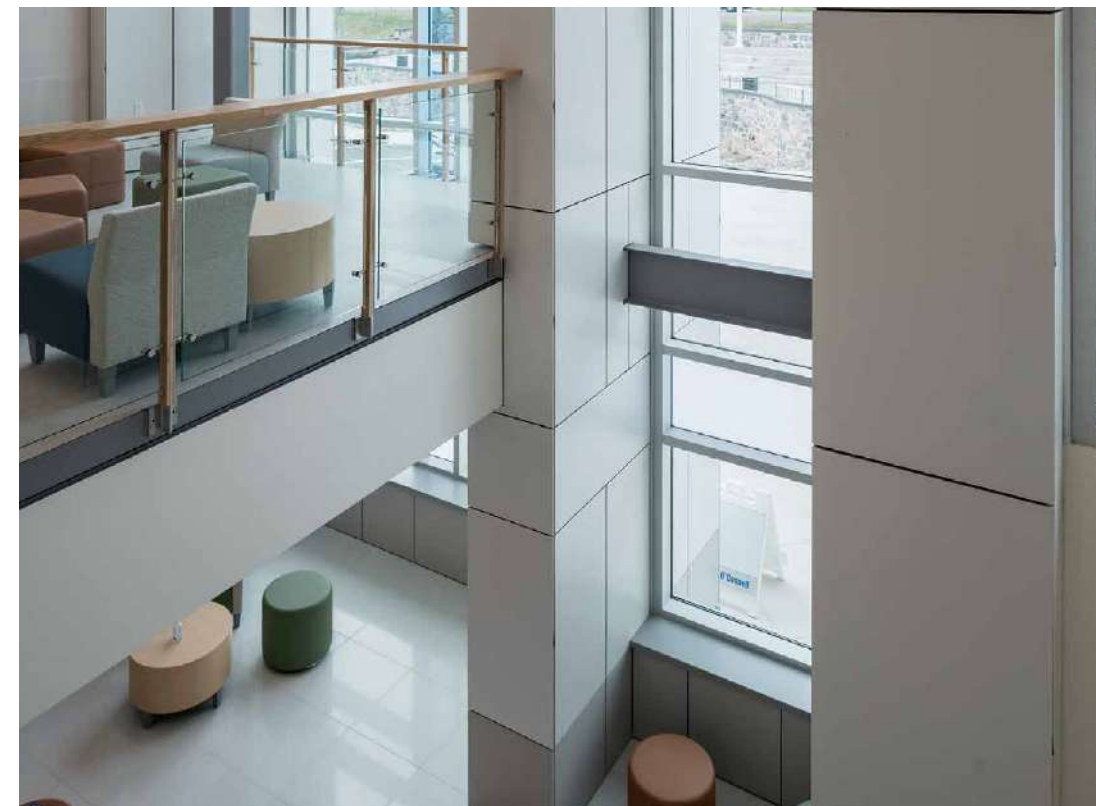
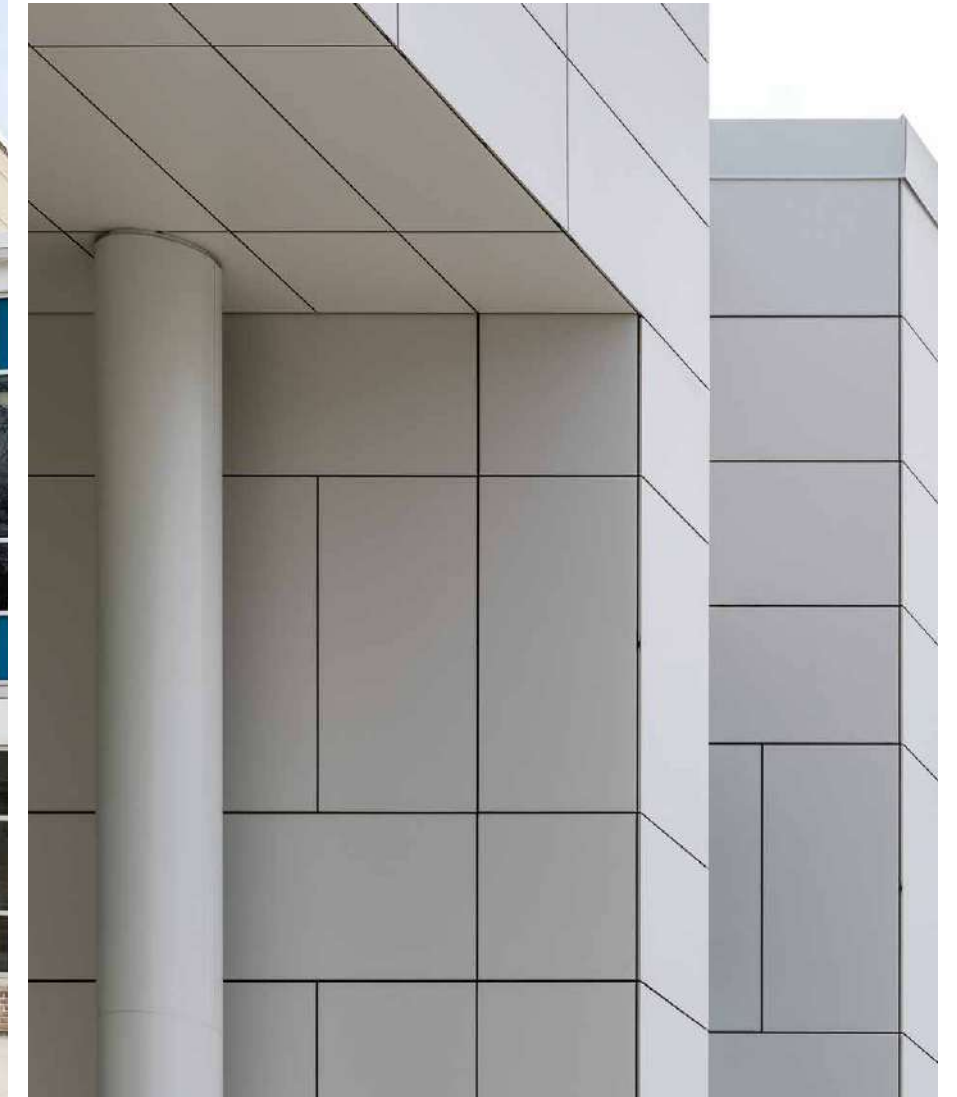
façades



BISHOP O'CONNELL HIGH SCHOOL Arlington (USA)

Based on a geometric and orderly structure, the architecture studio Maginniss + del Ninno Architects has designed the main entrance of this school, which welcomes more than 1,100 students. With more than 325 m² of ceramic panels in **Technic Nieve** by **Porcelanosa**, the new design of the entrance and atrium integrates multiple open study areas, a communal seating area and a space for a new lift, one of the main needs of the educational centre.

The renovation has given the building, which dates back to 1957, a new look with a refined finish that brings more light to the whole, thanks to the light tones of the new wall surfaces. In addition, the sobriety of forms gives a serene aspect to a space designed for educational purposes and high-volume use.



Ceramic panels in **Technic Nieve** by **Porcelanosa** dress the main entrance to **Bishop O'Connell High School**. With a clean aesthetic marked by geometric shapes, the ventilated façade is designed using the system **FV STON-KER®**, concealed anchoring by **Butech**, which creates a modern and luminous appearance based on highly resistant sustainable solutions.

Photos: Imagen Subliminal.

TAICHUNG TAIWAN

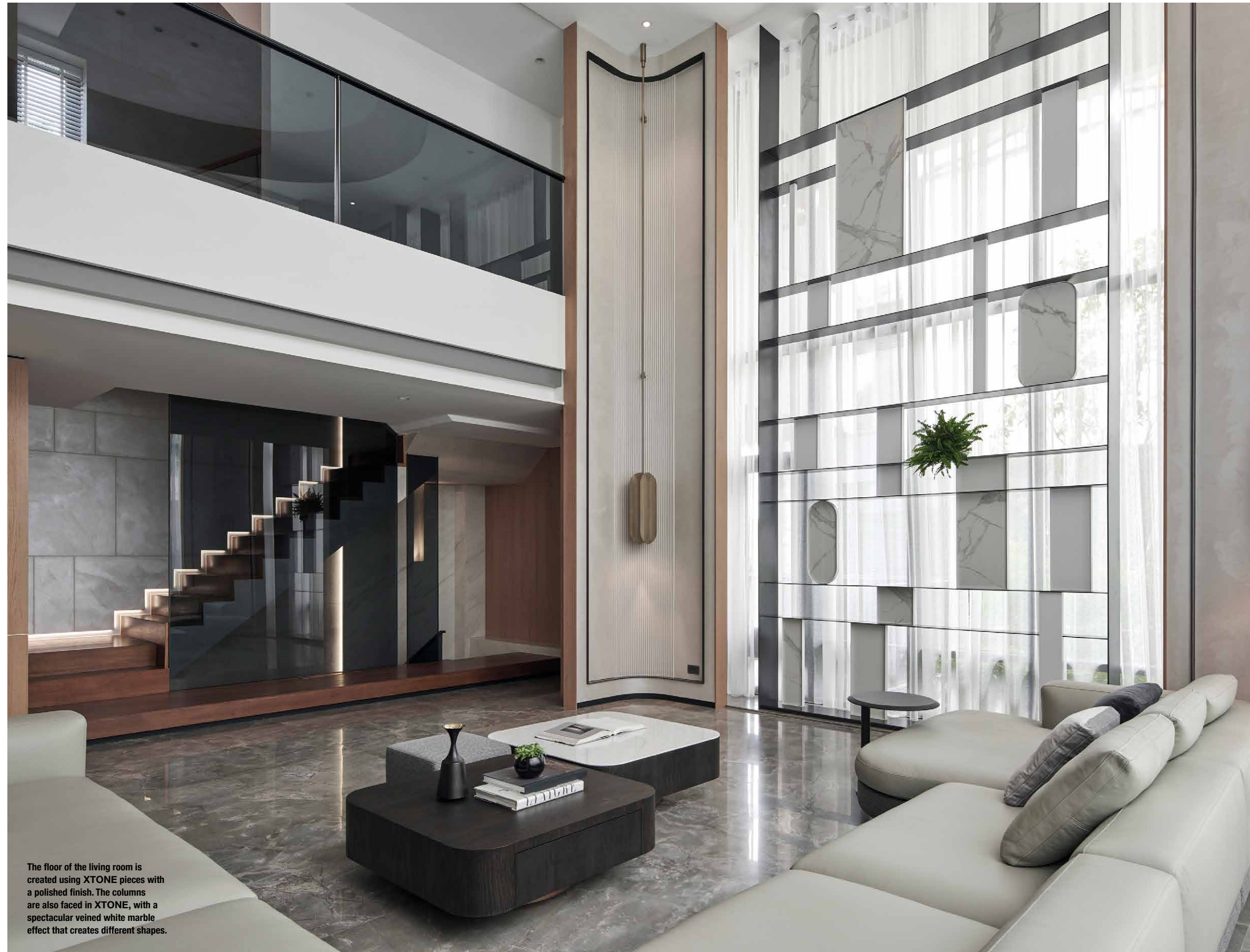
“The central concept that unites us is trust”

Sawara Architects and M.P. Architecture have led a project to create three exclusive homes in this Taiwanese city. The interior design work by Hochu Space and Load Studio has added character and elegance thanks to the use of **XTONE** for floor and wall finishes.

Text: TXELL MORENO

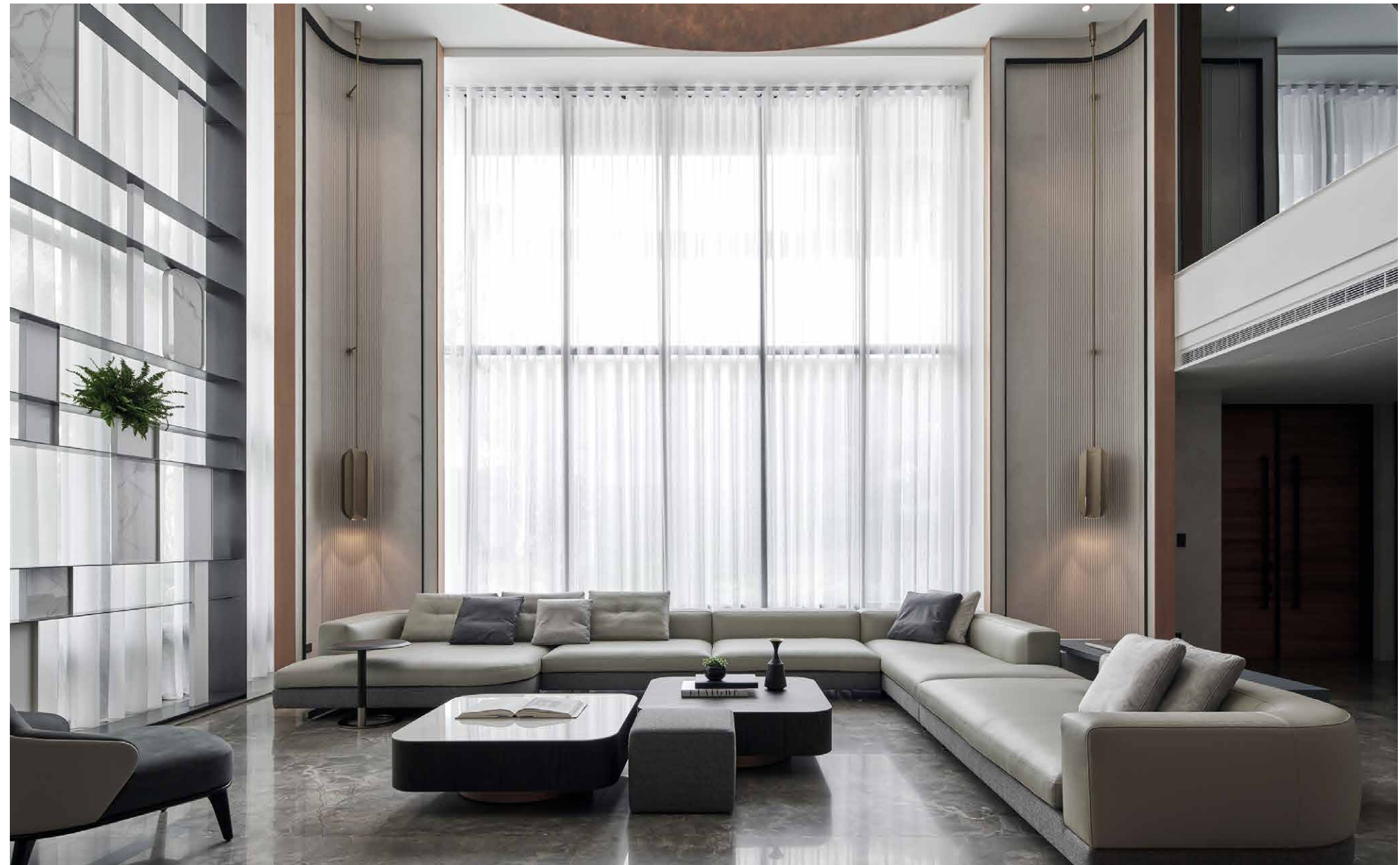


The multidisciplinary teams of Sawara Architects and M.P. Architecture were responsible for creating the environments that would later become three luxury residences in the Taiwanese city of Taichung.

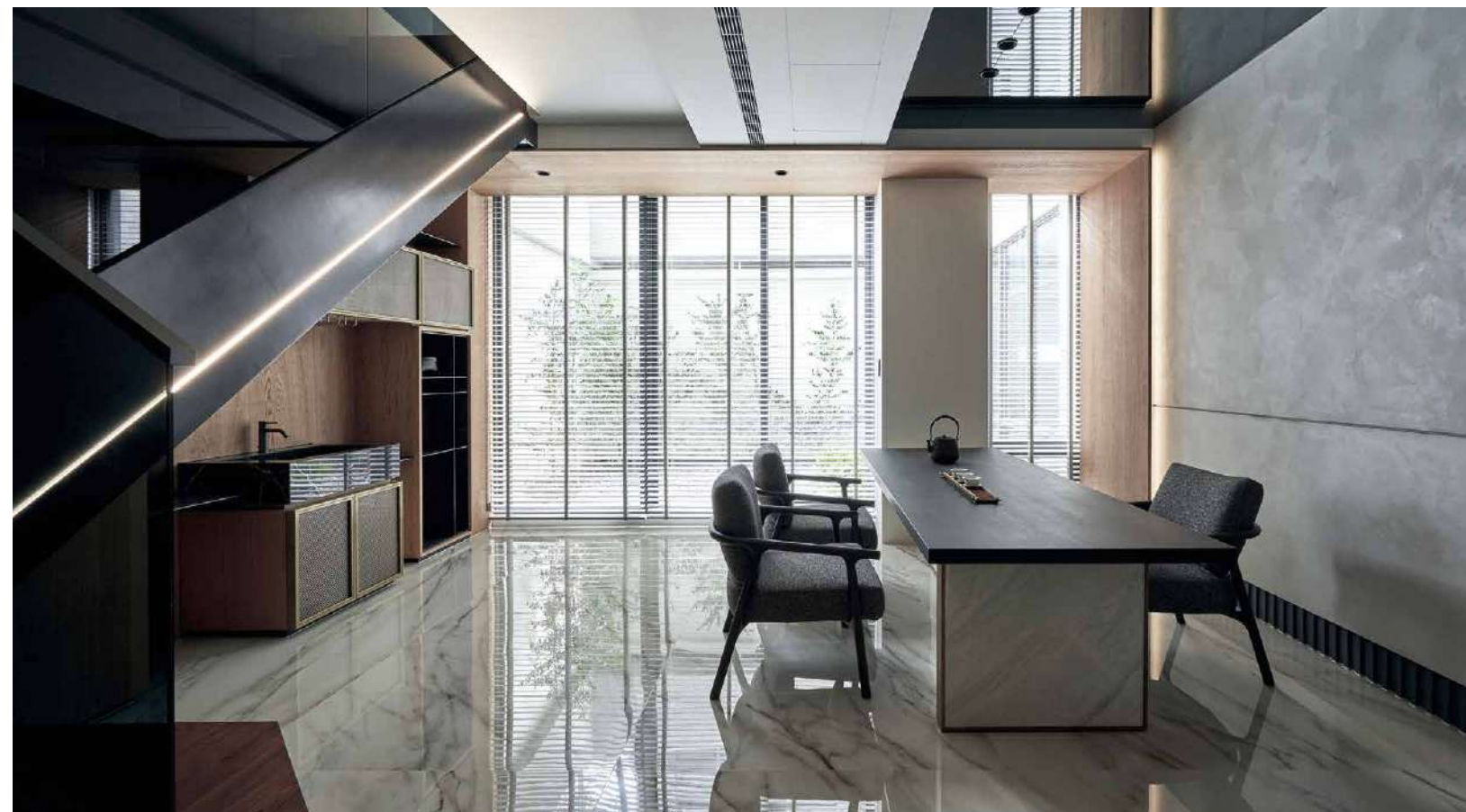


The floor of the living room is created using XTONE pieces with a polished finish. The columns are also faced in XTONE, with a spectacular veined white marble effect that creates different shapes.

Taichung, Taiwan's second largest city, is one of the most vibrant and cosmopolitan cities on the Asia-Pacific coast (south of the East China Sea). In one of the most exclusive enclaves of Taichung stands The TEN. This residential complex of luxury private homes has been the work of Sawara Architects and M.P. Architecture, an example of the multiculturalism that dominates architecture and design in Asia. Sawara Architects is based in Tokyo, but integrates into the Japanese and Chinese schools whilst excelling abroad with works in Taiwan, the United Kingdom and the Netherlands. For this project, they collaborated with the Taiwanese design studios Hochu Space and Load Studio, which have endowed the interiors of each of these homes with a seal of the highest quality; the modern exterior design is combined with an absolutely personalised interior layout, which satisfies the needs and requests of each owner.



The kitchen flooring, in light tones, is XTONE and contrasts with the furniture in darker colours that has been used for the storage area and office.
In this area, the sides of the table have been covered with the same XTONE.
Surfaces in large-format XTONE dress the floor of the living room and the adjoining spaces, bringing elegance and sophistication.





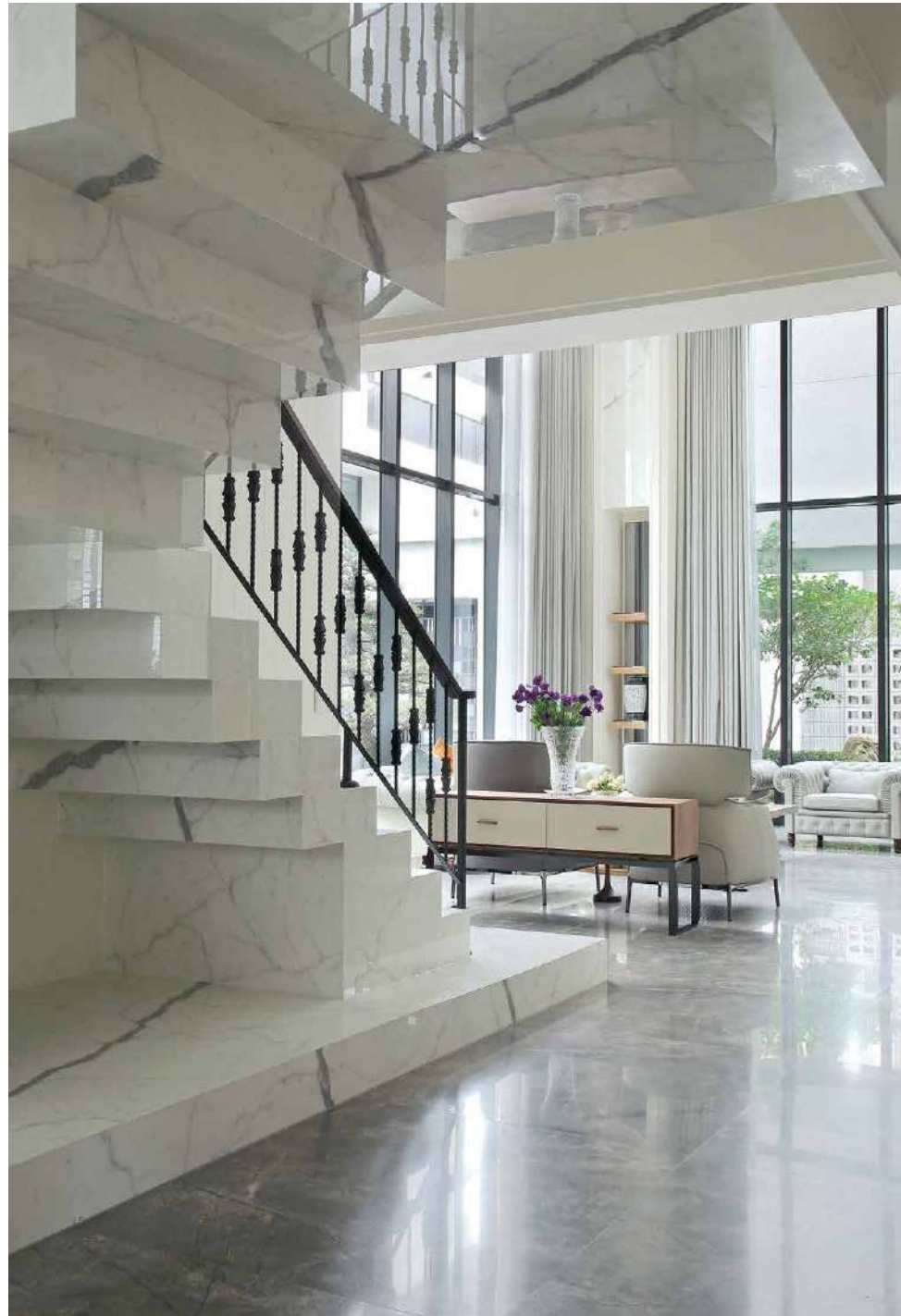
In property B2 of the project The TEN, various XTONE collections have been used for their sophistication, durability and quality. As in the rest of the houses in the complex, the floors have been finished in the compact sintered mineral XTONE, which reinterprets grey Italian marble with a design that adds depth and character. A combination of beauty and technology that is achieved with pronounced veins in two favoured colours: grey and beige.



The spaces have been designed to be double height, with a large daytime area featuring a spacious living room. A hallmark of the project is that the sintered compact mineral **XTONE** has been used to dress the walls and floors in all three houses, based on high-tech materials inspired by nature. "We always work on the selection of materials with our partners and clients so that they know the current European trends related to design", say Sawara Architects. "Regarding the technical aspects, we also work together to evaluate the viability of each project. The central concept between us is trust", they say.

In addition, in each home the finishes have been personalised through tailored design. For example, the stairs are dressed with pieces of **XTONE**: "Large-format ceramic stoneware can express itself with the texture of marble without the drawbacks of natural stone. You can achieve a spectacular result and an exquisite, gleaming





surface that will not be affected by exposure to the sun or by humidity." In addition, a careful combination of large ceramic pieces brings open and bright spaces to life, providing an excellent expression of comfort. The relationship between space and furniture takes the design to elevated levels: the distribution spaces fluently handle the connection between the different environments while promoting the entry of natural light and the best views of the city.

The TEN is a fascinating project in which Sawara Architects and M.P. Architecture have used their talent for construction, the best materials on the market and an intelligent interior design concept that brings elegance and luxury.



The living room walls, the columns and the stairs of this luxurious apartment are finished in large-format pieces by XTONE. The finish in white marble with golden veining combines with details and profiles of the same tone. The floor is by XTONE.

VILLA SECRETA

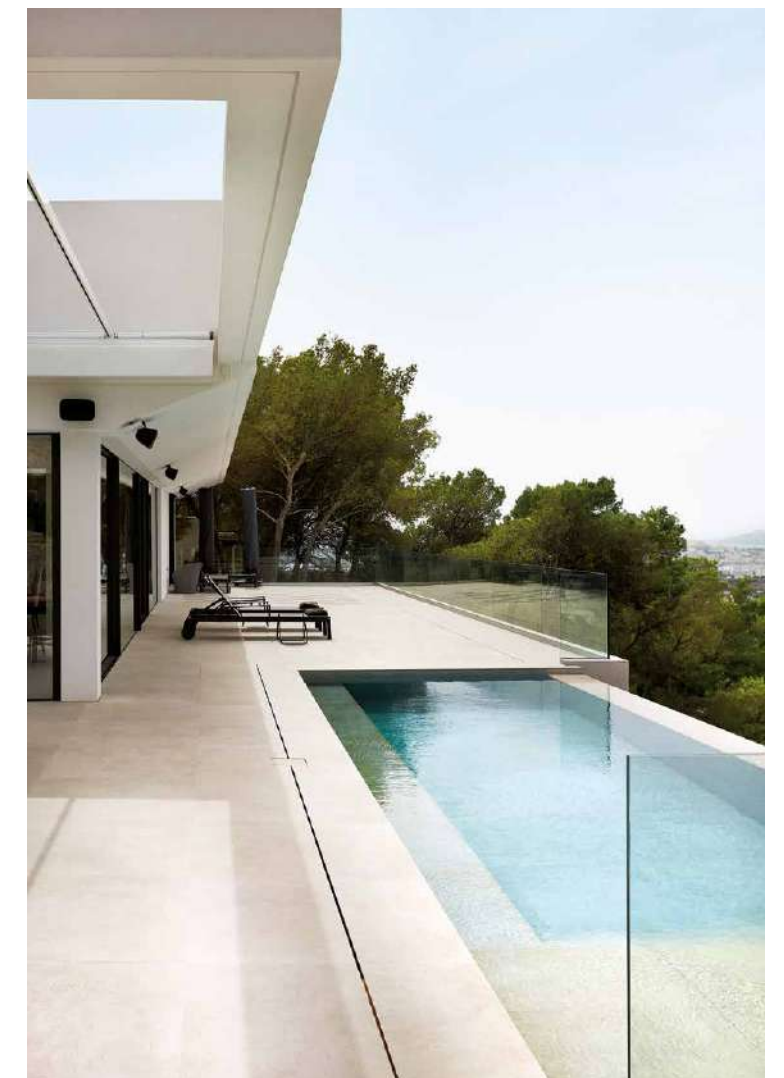
Mediterranean cool

Set in one of the most desirable areas of the Balearic Islands, this project triples the benefits by combining cutting-edge technology, comfortable interiors, and materials that enhance light and space.

Text: PAOLA ROCCA Photos: ALEX DEL RÍO



The terrace, paved with large-format pieces of the model Vela Smoked, by Porcelanosa. The joints are Colorstuk Rapid Gris, by Butech. The pool surround and interior also use Vela Smoked by Porcelanosa in its anti-slip version, which allows continuity near areas of water, and Colorstuk Rapid Gris by Butech.



The flooring in the living room is Vela Smoked by Porcelanosa.
 The kitchen, open to the living room, is from the sophisticated and avant-garde range Emotions, by Gamadecor.
 The kitchen worktop is XSTONE Liem Dark with a refined marble effect.
 Taps Spring by Noken.



The property, with 360° views spanning Dalt Vila, olive groves and the coastline, stands on one of the Can Furnet hills, one of the most iconic urbanisations on this Balearic island.

Through modern lines and luxurious functionality, the architecture allows the spaces to breathe and open up to the large terrace and the swimming pool. Light, air and vegetation make it clear that the style adapts to the landscape and the landscape to the style in a double game of intentions.

The house is built on two levels, and the upper level includes the large living room, open and seamlessly linked to the spectacular kitchen, the terrace and the landscaped pool. Also on this level is one of the master bedrooms, with direct access to the terrace. The *lifestyle* interior includes large sofas, artistic photos, and contemporary sculptures.

On the lower floor, which is accessed by a unique staircase, there are three bedrooms with bathrooms and access to the exterior. All these rooms are equipped with windows and lighting which employ technology to ensure the highest efficiency.



Villa Secreta is much more than a magnificent property next to the Mediterranean. It is a project designed down to every last detail by its owners, a couple who know how to define and combine modernity, quality and environmental beauty in their dream home.

For this, they have chosen elements of the highest quality in exterior and interior flooring, a large kitchen, and complete bathrooms, all made with materials from the various companies of the **PORCELANOSA Group**. The landscaping work in the outdoor spaces, built on different levels, allows stone and native plants to play their decorative role.

Without doubt, architecture displaying clear and defined lines and excellent materials make Villa Secreta a unique project in a privileged environment.



The flooring in the bedrooms is Vela Smoked by Porcelanosa, which has also been used on the floors in the main dressing room. The joints are Colorstuk Rapid Gris by Butech. In the bathrooms, wall tiles in earthy colours of Vela Grey and lighter flooring in Vela Smoked. Selected for the bathroom furniture are Blind Roble Noche and Last Roble Noche, both by Gamadecor. Washbasins by Krion® and taps Square chrome high spout by Noken. The vanity surfaces are in Liem Dark marble effect by XTONE.

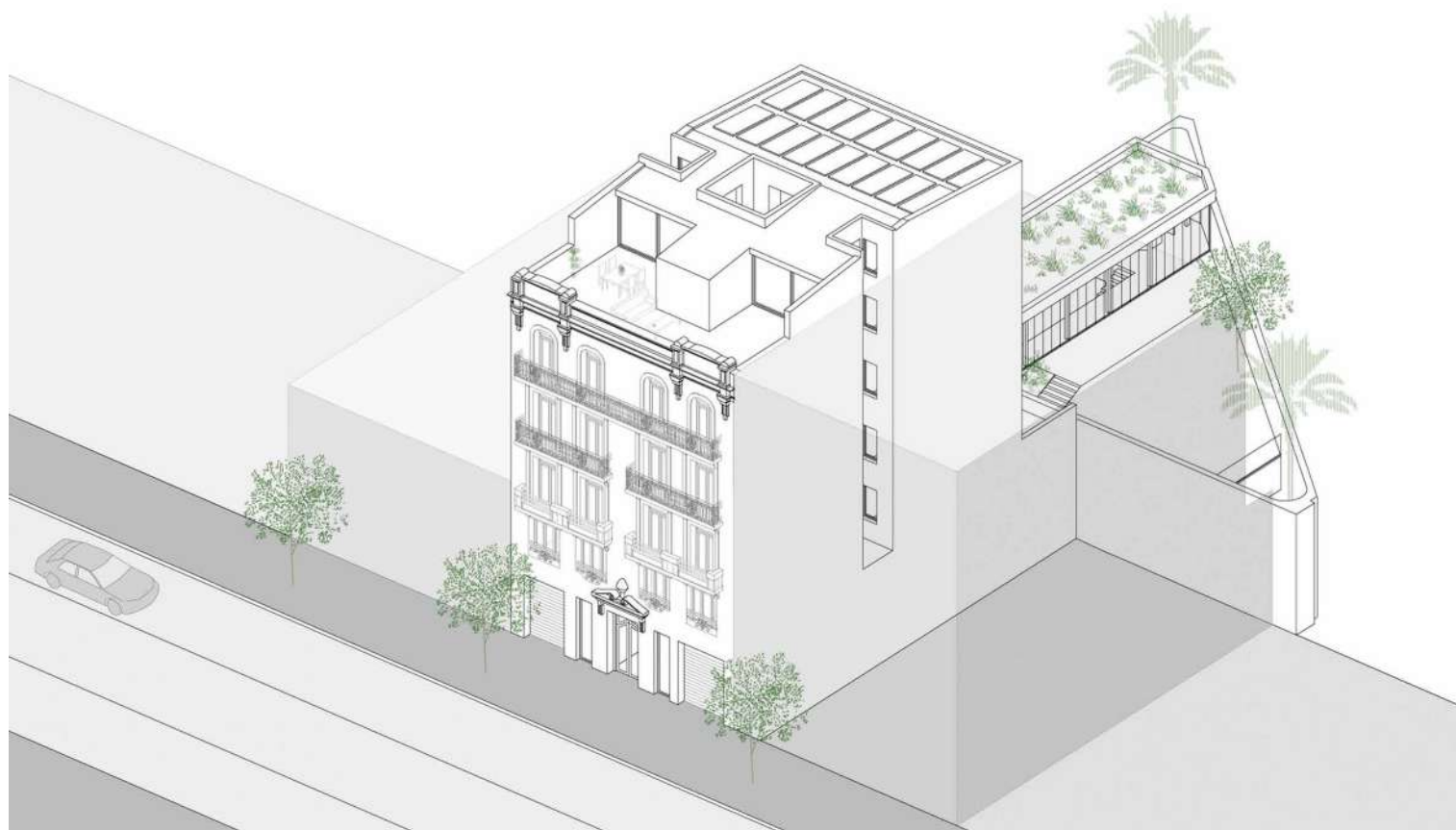


RESIDENTIAL BUILDING AC33

Comprehensive renovation with a sustainable vision

The centre of Valencia has a new benchmark in sustainable architecture and energy efficiency, a project that places families' comfort and happiness at the heart of the design.

Text: PACO MARTÍNEZ Photos: DAVID FRUTOS



Above these lines: the restoration has been respectful of the original façade, from 1921. All the details have been retained, such as the horizontal bars on the first floor windows. On the left: the large, open hallway that serves as the entrance to the building, distinguished by the mosaic world map on the wall, has been designed as a welcoming shared space. The flooring is in natural stone from the collection Persian White Classico, by L'Antic Colonial. Pieces are cut obliquely to resist deterioration due to wear and tear.

This project was born in November 2015, with the purchase of the building that occupies 33 Calle Almirante Cadarso, in the heart of the Ensanche district of Valencia. For Pepe Ribes, managing director of the Rimontgó estate agency and main promoter of the building, this represented the opportunity to improve the historical heritage of the city (the original building, from 1921, was protected) whilst establishing a benchmark in the creation of homes designed to provide solutions to the needs of today's families, making

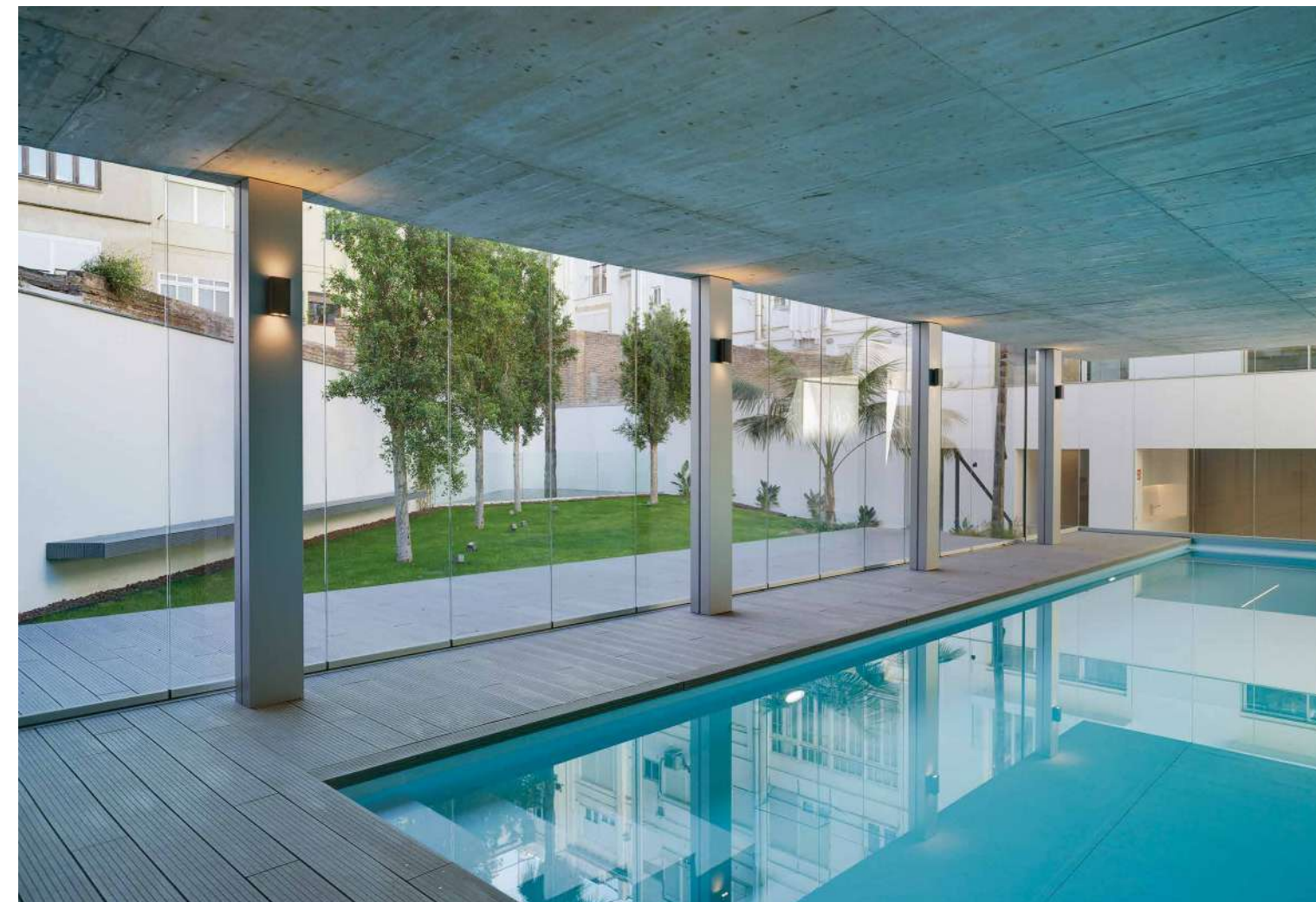
use of the most efficient and sustainable technological advances. "We have done it with the aim of making the people who live in the building more comfortable. Above all, we want them to be happy families, who can live in the best conditions throughout the year", he explains. To do this, he put himself in the hands of the Valencian studio ERRE arquitectura. María Ángeles Ros, partner architect of the studio, remembers "Create an oasis in the centre of Valencia. That was the first idea Pepe Ribes



brought us, and that became the seed of what would eventually become the building. We asked ourselves 'How can we introduce nature and sustainable ways of life into the city centre?', 'How can we reduce and optimise energy consumption?' These questions motivated us to think, to look for innovative solutions and to work with passion to create a space where families could have the highest possible quality of life."

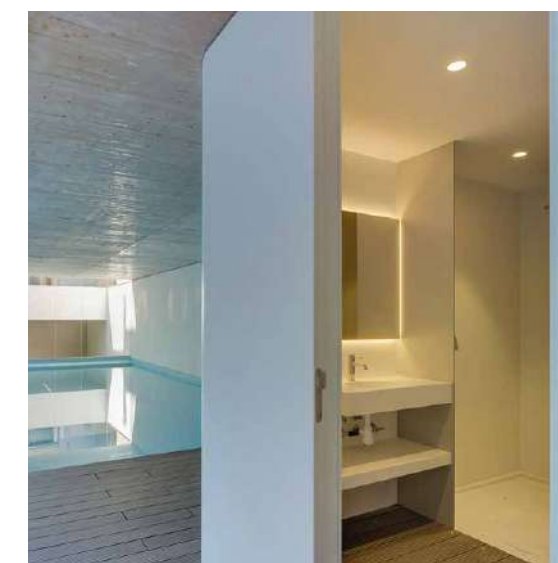
This is how the AC33 residential complex became the first residential building in Valencia to incorporate geothermal energy as a source of energy. "We asked permission to carry out surveys to find out the characteristics of the subsoil. We installed a first probe of 25 kW, and a second of 45 kW. This meets almost the entire energy demand. In addition, we added solar energy through the use of photovoltaic panels on the roof and aerothermal energy. Electricity consumption for heating and air conditioning has been reduced by more than 80%, and savings in CO₂ emissions have been more than 90%. It is the first building in the city to obtain the Energy Certificate A", says Pepe Ribes.

These solutions are accompanied by an organic design which creates spaces for coexistence between neighbours, from the wide and open hallway that welcomes people who enter from the street to the interior garden, presided over by two majestic 18-metre-high palm trees. Pepe Ribes tells us that "we wanted to have a beautiful interior patio, which would also brighten the view of the neighbours from the surrounding buildings." From the garden, there is access to the

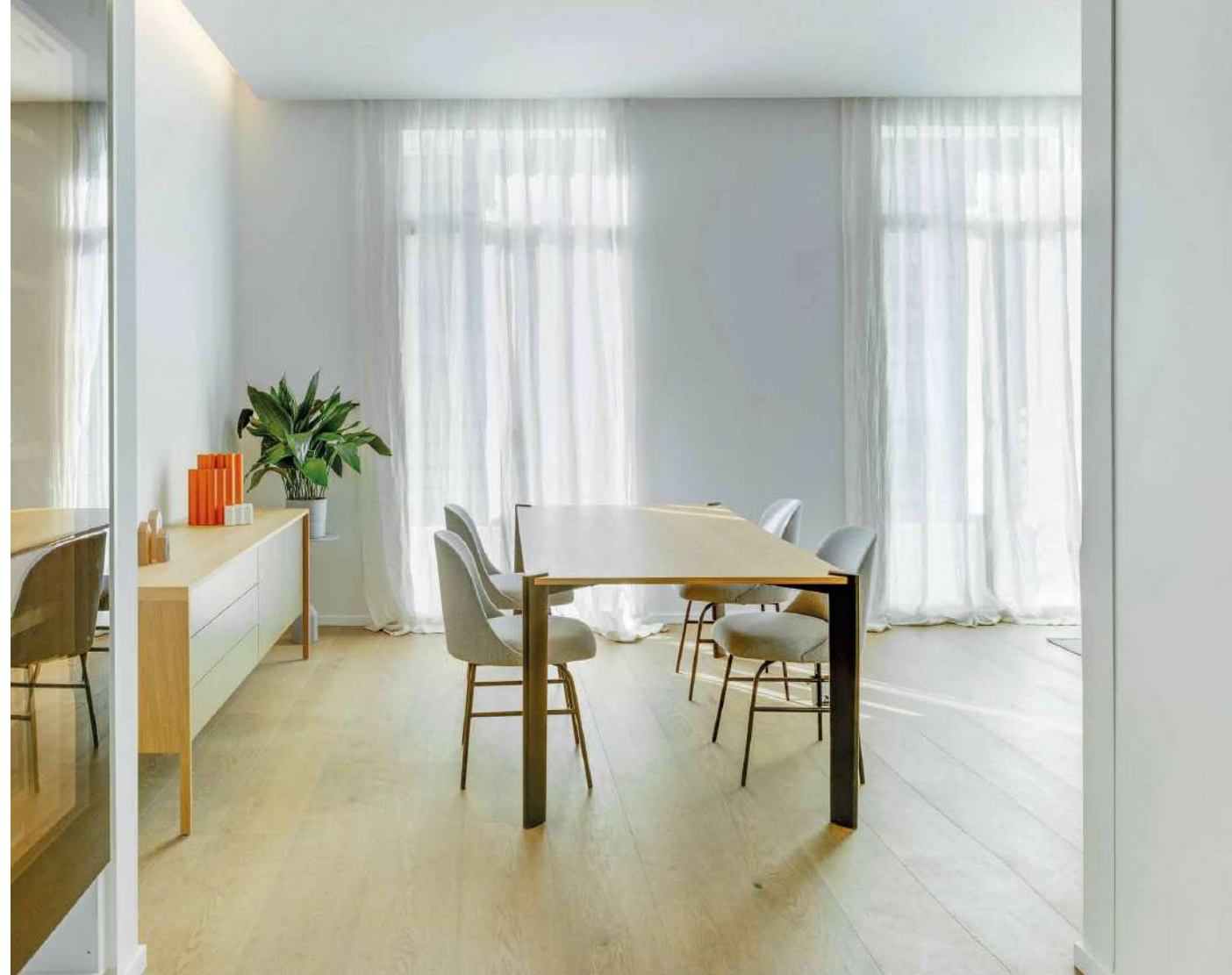


Above: the landing floors and communal stairs are finished in natural stone Persian White Classico, by L'Antic Colonial.

Above these lines and on the right: the rooms are designed to enhance the comfort of the tenants. The flooring is from the natural wood collection by L'Antic Colonial, with an intermediate layer that offers more stability and improves insulation.



The interior wall of the heated indoor pool and the associated bathroom module are made of KRION® Lux 1100 K Life, a sustainable material which is resistant to the growth of fungi and bacteria. Taps Round by Noken. The pool ceiling is in Crema Italia Sand, by L'Antic Colonial.



Left: natural wood flooring is used in the bedrooms, with walls finished in Persian White Classico, both by L'Antic Colonial. Below and on the right: bathroom furniture Next by Gamadecor, the shower trays are the model Ras by KRION® Solid, and all the taps and toilets are by Noken.



heated swimming pool, located under the first floor terrace. A staircase leads to the car park in the semi-basement, which enjoys natural light and ventilation. The apartments, one per floor, have dual aspect and cross ventilation. In addition, underfloor heating has been used "and integrated control systems have been installed, which allow each user to manage the safety, operation and energy use of air conditioning systems and connected domestic equipment, from their own smartphone", says María Ángeles Ros.

Companies from the **PORCELANOSA Group** have also participated in this ambitious project. "A company in which I have total confidence", says Pepe Ribes. "I asked them to help us with the best materials, and they have never failed us, neither with the materials, nor with the service." For María Ángeles Ros, talking about the **PORCELANOSA Group** "means talking about quality, professionalism and a constant desire for innovation and reinvention. A clear example has been the use of **KRION® Lux 1100 K-Life** in the swimming pool and associated bathroom facilities."



Top and above these lines: warmth is maintained in all rooms thanks to the use of natural wood flooring by L'Antic Colonial, as well as aluminium carpentry, and double glazing which is filled with argon gas. Left: the kitchens are from the range Emotions (E4.00, E4.70 and E4.90), by Gamadecor, the work surface is KRION® Lux 1100 K Life and the mixer tap is by Noken. The kitchen flooring is XTONE Aged Clay by Porcelanosa.



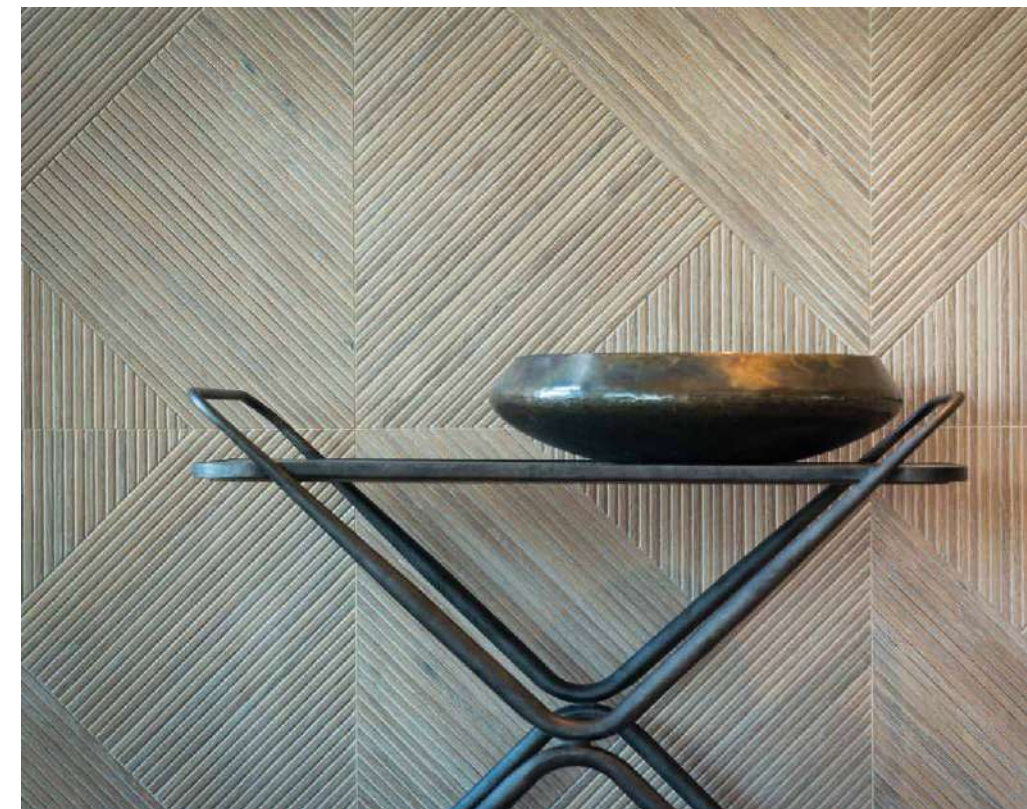
In order to visually unite the different spaces of the apartment (corridor, living room, dining room), the same flooring has been used throughout these rooms. This is the ceramic parquet PAR-KER® by Porcelanosa, in various formats, which provides variety and a natural feel. The furniture and walls thus reflect shades of natural inspiration, while allowing the free circulation of natural light. Below: in the dining area, one of the walls has been finished with Noa Almond by Porcelanosa, evoking a decorative wooden panel.

SANTIAGO DE CHILE

Understated sophistication

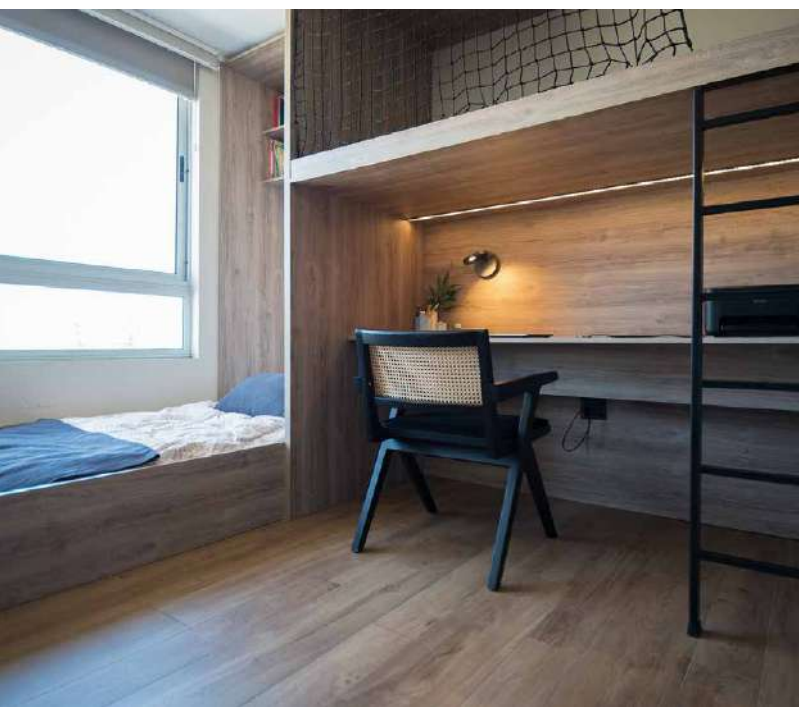
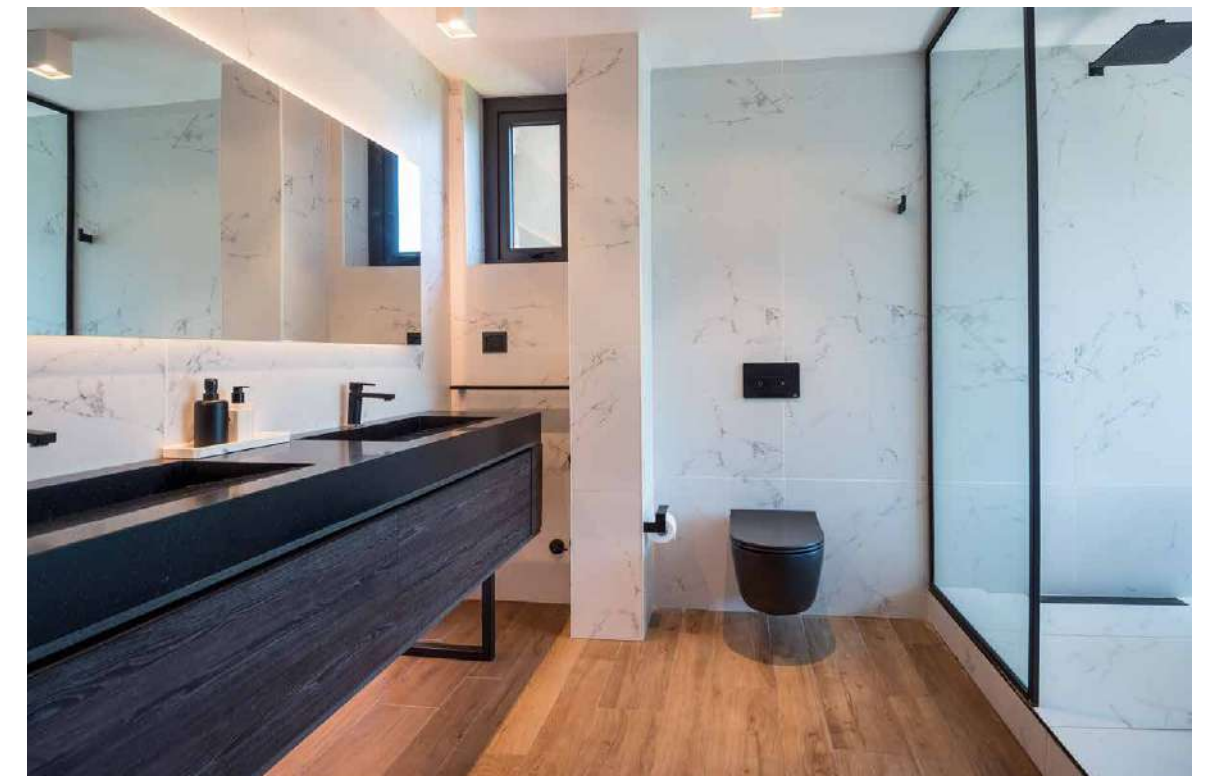
This elegant and comfortable apartment exudes calm and serenity. Natural light flows fluently between carefully selected finishes and fittings, with widespread use of materials by the **PORCELANOSA Group**.

Text: TXELL MORENO Photos: ALEJANDRO VALDÉS

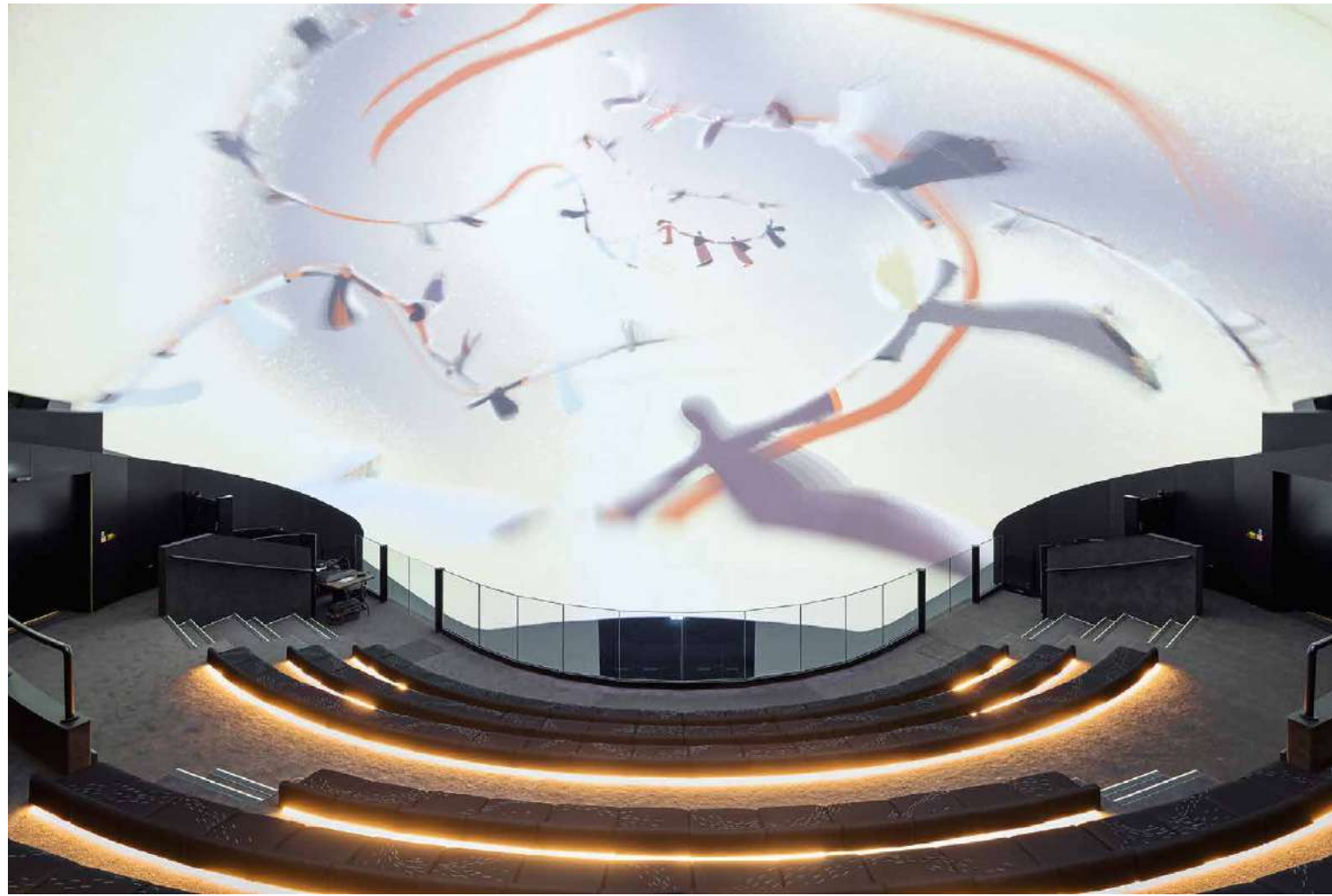




Previous page: on the covered terrace and in the child's bedroom, the ceramic panel PAR-KER® by Porcelanosa is again used throughout.
 Below: on the facing wall of the master bedroom, Old Beige and Newport Beige, by Porcelanosa.
 Above: the cloakroom is finished in the range Bottega Topo by Porcelanosa. Another of the bathrooms has the suspended toilet Urban-C and flush button Smart Line Oval, both by Noken.
 Right: master bathroom, with black vanity surface in KRION® Lux Ebano Nature, single lever basin mixer tap Urban, toilet Acro Compact and shower head Neptune Slim Square, all by Noken. The wall is finished in Carrara Bianco Natural, by Porcelanosa.



The interior designer Vicky Chá is the creator of this interior design project in Vitacura, an elegant residential area of Santiago, where she has opted for spatial fluidity, with natural light as the perfect partner. Based on natural materials and a seductive play of textures, the rooms breathe warmth and serenity, and invite you to enjoy the home, both from an intimate and familiar viewpoint and in a more open and social way. Its serene and welcoming aesthetic becomes the common denominator of the whole. Thanks to careful interior design, the rooms are versatile and functional. The apartment, with a surface area of 200 m², has a wide corridor that acts as a distribution area for rooms and bathrooms. At one end is the large open-plan day area, which comprises the living room and dining room, delimited by a dividing unit. Next to them, and behind sliding glass enclosures, a large covered terrace opens that, according to needs, allows full integration of the different spaces. The choice of a neutral colour palette, with a dominance of greys and earth tones, allows the furniture and the ceramic flooring in a natural wood finish **PAR-KER®** by **Porcelanosa** to accentuate their presence.



Left: interior of the UAE (United Arab Emirates) pavilion auditorium, with KRION® Lux in black on the side walls. On this page: the exterior of the Qatar pavilion is reminiscent of the sails of two crossing vessels. It is finished in KRION® 1100 K-Life, which provides durability, luminosity and resistance to sunlight.



Reinterpreting the legacy of tradition

Santiago Calatrava has designed two of the most innovative pavilions at this great global event, with the collaboration of the **PORCELANOSA Group**.

Text: PACO MARTÍNEZ
Photos: BARBARA BURG | OLIVER SCHUH - PALLADIUM PHOTODESIGN GBR

The inspiration for the Qatar pavilion, with a total area of 960 m², came from the country's coat of arms. The building is divided into two bodies whose exteriors have been covered with the solid surface **KRION® Lux** by the **PORCELANOSA Group**. The white colour brings to mind the crossing sails of two *dhow*s (the traditional Qatari boat that appears in the coat of arms, along with two palm trees and two crossed swords). The tallest reaches 15 metres in height and is supported by a structure of interlocking steel columns, with a total weight of 100 tonnes.

Inside, visitors can stroll through the two main galleries, with various exhibits which use the latest technologies (holograms, liquid and LED displays, 3D mapping...) to create a complete sensory experience. The adjoining tower is made up of two steel columns joined by a series of light aluminium slats, picking up the motif of the two palm trees on the emblem.

Sustainability awareness is another important factor at Expo 2020. Choosing **KRION® Lux 1100 K-Life** for the exterior meets all the requirements, since it is a 100% recyclable material which guarantees durability, ease of maintenance and resistance to fungi and bacteria. In addition, it has great resistance to solar radiation, which is essential considering Dubai's extreme climate.

A winged building

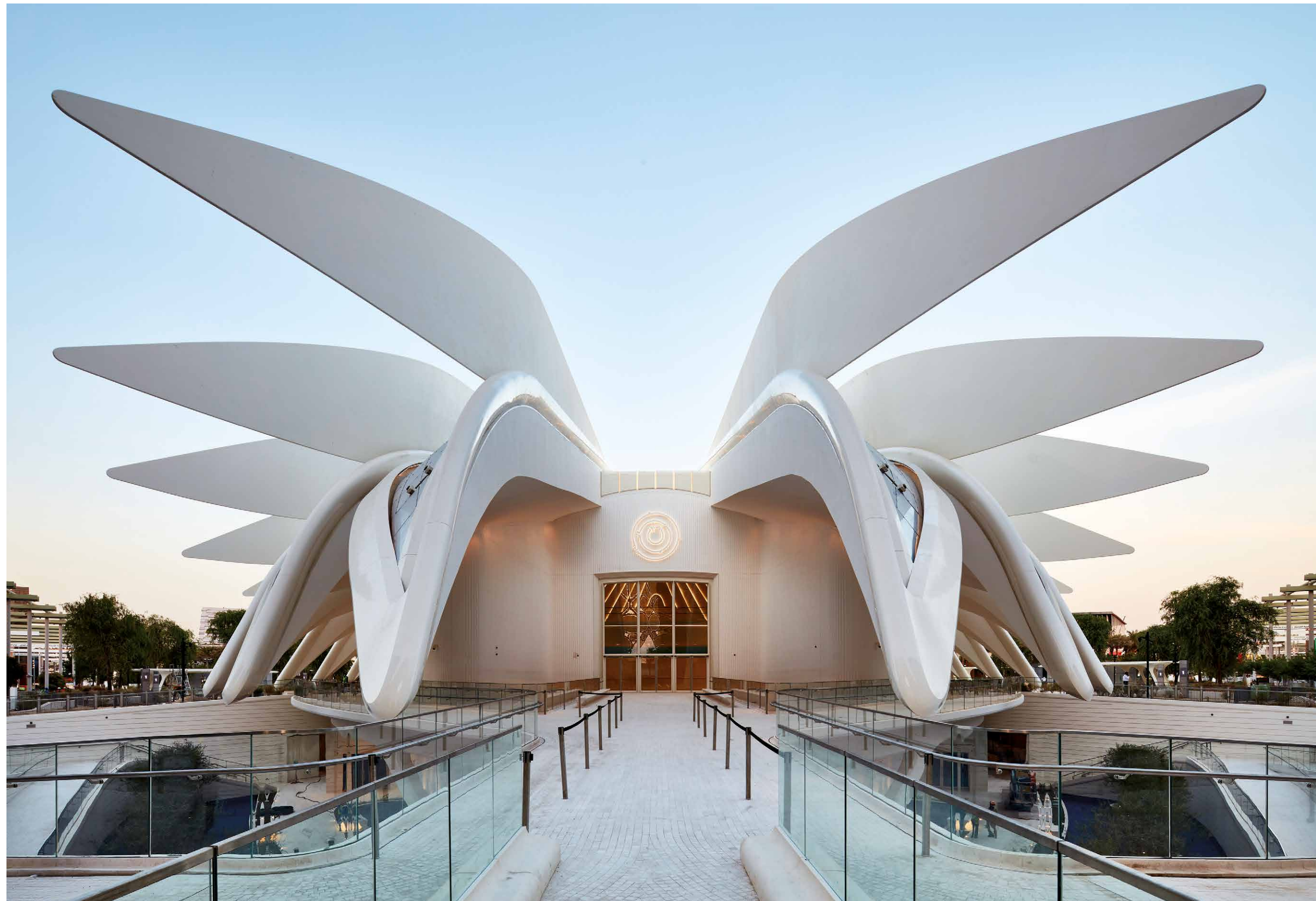
The United Arab Emirates pavilion also reflects the close relationship that Santiago Calatrava's studio maintains with this area of the Persian Gulf. In this case, the inspiration has been the totemic animal of this federation of emirates: the falcon. Following that idea, the most impressive aspect of the building is the outer cover, made up of 28 carbon fibre "hawk wings". An automated system allows these wings to be opened, unfolded or closed in just three minutes. Each wing supports a series of solar panels that supply power to the pavilion.



Photo: © EXPO2020DUBAI



Photo: © EXPO2020DUBAI



The roof, made of 28 carbon fibre 'wings', is the hallmark of the United Arab Emirates pavilion and presents a spectacular view both day and night. When it opens, it resembles a hawk about to take flight.



The large hemisphere that presides over the interior of the UAE pavilion is made from KRION® Lux 1100 K-Life. Its use brings brightness and luminosity. Facing page: view of the Qatar pavilion, with the exterior also clad in KRION® Lux.



Photos: © Arnulf Heitrich / Imago Images / EFE

The building has an area of 1,500 m² and is divided into four levels. The large interior atrium is dominated by a skylight that carries the emblem of the Exhibition. The spaces are extensive, bathed in abundant natural light, and host immersive exhibits on the history and future of the Emirates. The levels are arranged around a truncated hemispherical ball made with **KRION® Lux 1100 K-Life**, which brings more light to the pavilion.

The sphere houses a small auditorium for 200 people. The solid surface **KRION® Lux** has also been used to clad the interior walls, but this time in black, in contrast to the white that dominates the building. Like the Qatar pavilion, this building too is LEED Platinum certified, reflecting its high sustainability credentials.



Photo: Thomas Hoeffgen / Courtesy of Calatrava



Santiago Calatrava

One of the great names in international architecture. He studied architecture at the Escuela Técnica Superior de Arquitectura de la Universidad Politécnica in Valencia, where he completed a postgraduate degree in urban planning. He continued his training at the Federal Institute of Technology in Zurich (ETHZ), where he graduated as an architect and civil engineer. This dual facet, to which he adds that of sculptor, has been present throughout his career. His projects include the Athens Olympic Complex (2004); the Turning Torso skyscraper in Malmö (2005); the City of Arts and Sciences of Valencia (2009); the Museo do Amanhã, in Rio de Janeiro (2015); and the World Trade Center Transportation Hub, in New York (2016). He has been recognised with the Prince of Asturias Award for the Arts (1999) and with the Spanish National Prize for Architecture and the Spanish National Prize for Civil Engineering (both in 2005).

MOSCOW

A minimalist apartment embraced by natural light

The owners of this apartment have a great passion for travel, and this led the architects Anton and Natalia Petrovy, from the studio ArchiTexture, to design a home in keeping with the elegant and functional aesthetics of a large hotel suite.

Text: TXELL MORENO Photos: SERGEY KRASYUK



The interior designers have sought to take advantage of the natural light with the use of large windows and open, airy spaces, such as the living room area, which are integrated to create a cosy atmosphere.



With an area of 132 m², this elegant apartment with a minimalist aesthetic is dressed with contemporary furniture using a neutral colour palette. The apartment is rectangular in plan, and access is in the centre, leaving the main functional areas at either end. A plaster bas-relief welcomes you into the apartment and establishes an effect of depth and continuity along the passage area, leading into the daytime area. Here, the living room, dining room and kitchen share the same spacious open area, endowed with well-considered natural light.

The owners sought to integrate the bathrooms into the apartment's two bedrooms, in the style of modern hotel suites. With this in mind, Anton and Natalia Petrovy of the Russian studio ArchiTexture designed glass partitions that promote spatial separation while controlling the visual relationship and the entry of natural light into the interior, maintaining privacy in the bathrooms through the play of different colours in the glass.

The materials by the **PORCELANOSA Group**, used in bathrooms and bedrooms, provide beauty, durability, and an elegant and functional style.



The ceramic stoneware that covers the wall of the bedroom and its integrated bathroom is XTONE Aria White Polished by Porcelanosa. The flooring is Carrara Blanco Natural by Porcelanosa. The taps, Round, the bathtub, Lounge Oval, and the mirror are by Noken. The vanity surface with dual washbasins is by Krion®.

Facing page: the bathroom floor is Carrara Blanco Natural by Porcelanosa.

The furniture is by Gamadecor and the built-in tap in copper finish is the model Tono by Noken.

The suspended toilet chosen for the apartment's only independent bathroom is the NK Concept by Noken.

Wood-effect wallcovering, PAR-KER® by Porcelanosa. The taps in black, Round by Noken. The shower screen is S+Line Black by Porcelanosa.



ONLY YOU HOTEL VALENCIA

Contemporary and eclectic luxury has arrived

Capturing the dynamic and cosmopolitan rhythm of a city in its prime. The new Palladium Group hotel, with interior design by Lázaro Rosa-Violán and materials by the **PORCELANOSA Group**, highlights the difference.

Text: PAOLA ROCCA Photos: Courtesy of ONLY YOU HOTEL



The flooring selected for the main staircase, reception and public areas of the renovated Only YOU Hotel Valencia is from the collection Linkfloor Mountain by L'Antic Colonial. Its natural finish brings warmth and continuity to the whole project.



In Plaza de Rodrigo Botet, 5, where the iconic Hotel Astoria Palace was located, the Only YOU Valencia shines, with its nine floors, 191 rooms, and communal rooms open to hotel guests and the public.

The immense creativity of the interior architect Lázaro Rosa-Violán is inspired by the Mediterranean and shapes the hotel's contemporary design with textures, forms and colours that transport you to the seashore.

Originality is visible in every corner of the hotel, for example in the novel reception-cocktail bar, thanks to which guests can choose from a selection of cocktails to enjoy while checking in.

On its nine floors, the modern rooms are finished using the best materials by the **PORCELANOSA Group**. Notable are the *Homey Suites*, rooms with fully-equipped living rooms and kitchens, as well as spacious, bright terraces. The *Panoramic Suite*, of 80 m², is the star room of this very modern hotel.

On the top floor, El Mirador restaurant is a culinary space run by chef José María Climente, with magnificent rice dishes and 360° views of the city. Sunday brunches here create a meeting point for locals and visitors alike. The lobby at the Only YOU Valencia is where mixologist Iván Talens offers his signature selection of cocktails and the classic "esmorçaret", a Valencian culinary ritual.

The stairs are finished in **Linkfloor Mountain Natural + Mamperlan Roble Macizo** by L'Antic Colonial. The same flooring is used for the lounge areas. Below, right: the bar floor with natural wood effect is **Linkfloor Mountain Natural**. Below these lines: **El Mirador** restaurant, with a Mediterranean-inspired aesthetic, offers a careful interplay of textures and materials. The flooring is custom-made, based on the range **Craft** by L'Antic Colonial.



In the Salvaje restaurant, the cuisine is Japanese fusion with French and Spanish influences, by the Venezuelan chef Fermín Azkue.

To finish establishing the hotel as the new recreational space in Valencia, the florist El Atelier de la Flor has opened a space for the sale of flowers, arrangements and plants in the very large lobby. The Madrid-based tailors Tom Black are also on hand with their made-to-measure service.

A combination of location, interior design, architecture and the project management talent of PLC Management, make the Only YOU Hotel Valencia an excellent reason to visit one of the most attractive cities of the Spanish Mediterranean.

Right: in the bedroom, the flooring is laminate flooring AC5 Cross Luxor Cream by L'Antic Colonial.

Below: in the bathroom, the circular washbasins Karon Circle Grey Stone are complemented by the taps Lignage, all by Noken. The shower walls are finished in the range of XTONE white marbles by Porcelanosa. The bathtub is the model Arquitect by Noken. The built-in taps Round, in a chrome finish, and taps Lignage, in brushed copper, both by Noken.



On this page: the flooring in the gym, meeting rooms and public areas is from the range Linkfloor Mountain Natural by L'Antic Colonial. A combination that works well with the functional equipment and the glazed enclosures, enabling the circulation of natural light in the interiors.



Lázaro Rosa-Violán
He has achieved, as he himself says, "a very capital-city concept", with a philosophy that compares favourably with the best hotels in international cities such as New York or Paris. "The fact that this is a five star hotel means that everything has been created to the highest quality standards." Everything exudes cosmopolitan and eclectic luxury, from the chromatic range of earth tones, "with design details featuring robust mouldings and timeless furniture." The success of Lázaro Rosa-Violán in bringing a wealth of culinary activity to the ninth floor has been noted, as has the modernity of the public areas of the hall. Only YOU reflects the best of Valencia and, above all, represents its wonderful and original design culture.

Photo: Alfonso Cebalza



interview **MANUEL CLAVEL**

“Discovering that architecture can make a better world has been a great joy”

Specialisation, understood as the ability to solve architectural problems, characterises Clavel Arquitectos. This studio, based in Murcia and led by Manuel Clavel, views each new project as a challenge to be addressed with care and determination.

Text: TXELL MORENO Portrait photo: ENRIQUE MARTÍNEZ BUESO Photos: DAVID FRUTOS

What is the common factor in projects by Clavel Arquitectos?

An unprejudiced approach to the discipline that leads us to understand architecture and interior design as an integrated whole in which the treatment of light is essential. The question of style or composition appears as the response to a more holistic approach that has to do with the experience that we want the user to have. In other words, we are interested in the ability to surprise, but not to impose as brutalism did with its beautiful and rough pieces, which were formulated in a way that didn't treat the public kindly. We have an obligation not to be so self-referential and to connect more with users.

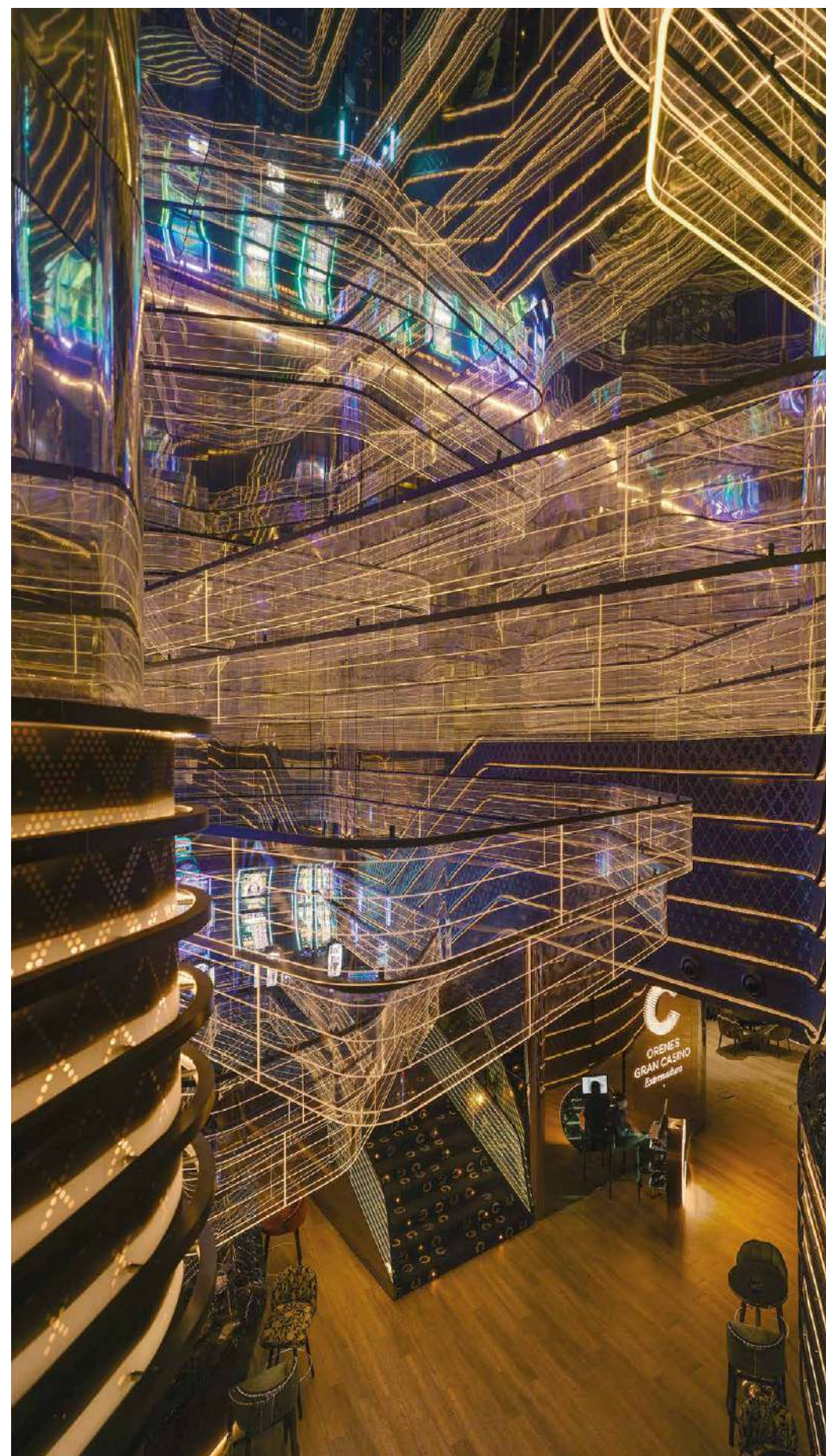
You have a meteoric track record. What do you think attracts audiences from half the world to trust your studio?

In our work, there is an optimistic attitude and a confidence in the future, which results in a playful experience associated with a very particular type of emotion that empathises with the user. Sometimes, through architecture, we reproduce experiences that we have had in other places, at other times. In the restaurants for Nazario Cano in Odiseo, there is a whole reflection of the Mediterranean. The water, the vegetation, the imperfect, the smell of esparto grass, the handmade ceramics... It is a collection of emotions that you share, like when you see something that you want to tell your friends about as soon as it happens. When I

travel, I try to document those emotions. In the studio, we always try to put ourselves in the user's shoes when we create our designs. And all this is influenced by materials, textures, sounds, smells... It is a question of reassembling these elements in order to reproduce that atmosphere and make it emotional.

As creators of projects as diverse as restaurants, schools, nautical clubs and homes, how do you cope with the different needs?

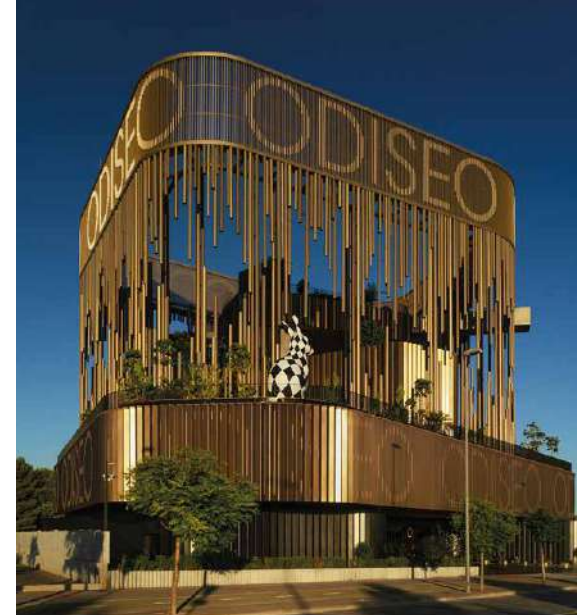
In the face of hyper-specialisation, I have always preferred that my team specialise in solving unique architectural problems, whatever the programmes. And those answers are not the obvious ones. It is true that experience fundamentally allows you not to repeat mistakes, but too much experience, or too much repetition of solutions, leads you along the dangerous path of thinking that you know everything, a situation that annihilates you as a creator, since the creative act requires doubt and vertigo as stimulants. The best way to protect ourselves from this is to form teams within the office where some members have a lot of experience in a certain area and others do not. In this way, what is really important is stimulated: solving complex architectural problems. And so, in response to this diverse portfolio, clients approach us with equally varied problems. That is, if you only build houses, they will only look for you to build houses. We try to avoid that situation.



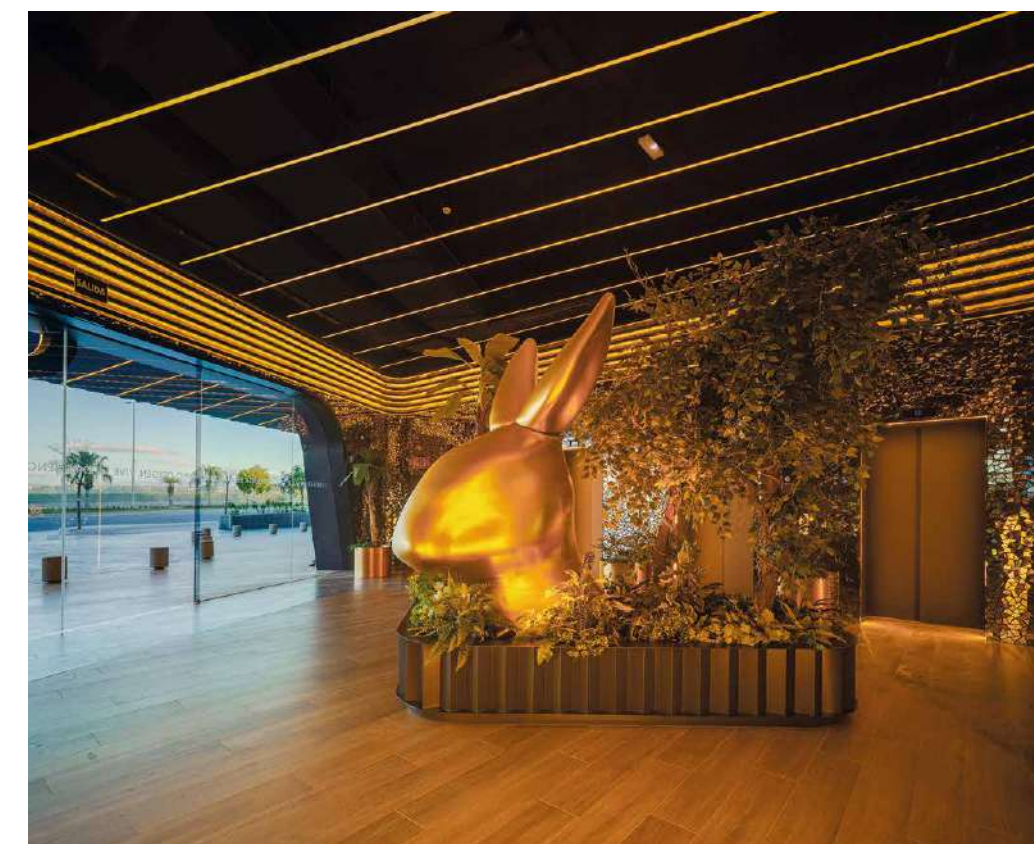
A striking play of lights and curvilinear reflections on a black background characterises the renovation of the 5-star NH Gran Hotel Casino Extremadura, restaurant and leisure centre in Badajoz, where the flooring is PAR-KER® Smart Tanzania Almond by Porcelanosa. Part of the ceiling was lined with XTONE Nylo Black by Porcelanosa installed on a structure specifically designed for this project by the Technical Department of Butech.



Left: detail of the reception of the Tryp Murcia Rincón de Pepe, created in KRION® Lux.
Below: in Drexco Gran Via restaurant in Murcia, the set of individual pyramids in KRION® Lux 1100 and the façade system developed by the technical department of Butech. The installation was carried out by Porcelanosa. The flooring is PAR-KER® Tanzania Almond by Porcelanosa.



In its search to democratise luxury, Clavel Arquitectos has implemented a design in Odiseo, a gastronomic and leisure centre in Murcia, where the PAR-KER® Tanzania Almond by Porcelanosa covers the floors in combination with the compact sintered material XTONE Nylo Noir and KRION® Lux in different shades.



What materials and architectural solutions are essential in a design by Clavel Arquitectos?

If there is a constant in our work, it is the use of light, which has been an obsession in all our projects. The effort to create a lighting concept with its own personality is palpable. It is exciting to see how our car park in Núñez de Balboa, in Madrid, was recognised as Light Art Project of the Year by the Lighting Design Awards in London.

What is your experimentation process with new materials?

Nowadays it is not so much in the use of new materials, although that's also important, but in the experimentation with new concepts that we are dealing with today, such as innovation and luxury, about which there is a love-hate relationship in the popular imagination. Such a radical turn towards the vintage is worrying. If we take for granted the idea that, as a society, any time in the past was better, we are in a bad way. You have to love the past, but at the same time believe in the future, and I see it as warm, inclusive, sensual. Innovation is not to be feared, you have to work with her to envision the future.

And in the case of luxury, faced with the idea of destroying it, I aim to try to make it more accessible by redefining it. Not to associate it exclusively with the expensive, but with the extraordinary.

“I have always preferred my team to specialise in solving unique architectural problems, whatever the programmes.”

Do you think architecture should try to influence the way society works?

In fact it does. One of the greatest joys that the profession has brought me is exactly that discovery, that architecture can make a better world. As architects, that is our great superpower, but also our great responsibility according to the Peter Parker principle. Before becoming an architect, I considered following the family tradition and becoming a doctor, because the way health professionals positively affect the lives of others is very direct. After deciding to be an architect, I was able to confirm that architecture and interior design also have the ability to do so, as we build the backdrop where people's lives unfold.

In your role as a teacher, what are you trying to instil in your students, creators of the architecture of tomorrow?

The projects of my students at the University of Miami have a focus on social responsibility. In recent years, they have worked on emergency projects after the hurricanes in the Bahamas, and in the shantytowns of Cerro San Cristóba in Lima. It is an intense way of creating a sensitivity to end-users that generates a very interesting legacy.

What type of architecture do we need to think about in the future to achieve real sustainability, beyond discourse?

The dramatic situation that we have experienced in recent months has revealed many deficiencies in current architecture, mainly shortcomings in the houses in which we live. Perhaps two essential issues to consider are the flexibility and suburbanisation of the home. The first of these leads us to transformable homes, adaptable to each of the user's needs at any given moment. Homes are on the way to becoming the offices and workplaces of the future, so we must create domestic spaces capable of being converted or adapted to work spaces. And the challenge lies right there, in designing comfortable adaptability for the user. In relation to the second concept, that of housing suburbanisation, it consists of recreating the conditions of suburban housing in city houses. It has become clear during the months of confinement that the outdoor and intermediate spaces in the home should not be a luxury but a right, especially in a climate as good as the one we have in Spain. We must ensure homes have those necessary outdoor spaces that allow their inhabitants a long view towards the horizon or nature. That is the great challenge, which will limit an unsustainable exodus to second homes.

“Our experimentation is not so much in the use of new materials, but with new concepts such as innovation and luxury, about which there is a love-hate relationship in the popular imagination.”

What do you imagine the cities of tomorrow will be like?

I am very optimistic. The progressive electrification of transport will limit pollution and noise. The automation of the transport of goods and people combined with remote working will allow us to save time in daily tasks and enjoy more leisure time. But all these processes could limit our real contacts with other people, so these spaces for socialisation and leisure must be tremendously attractive for people to want to leave their homes. This is where there will be a great opportunity for innovation.

What architectural works or names would you point to as influences in your work?

The pools in Leça da Palmeira, by Siza, or the most landscapist work of César Manrique. It is wonderful to see how their intervention improves nature.

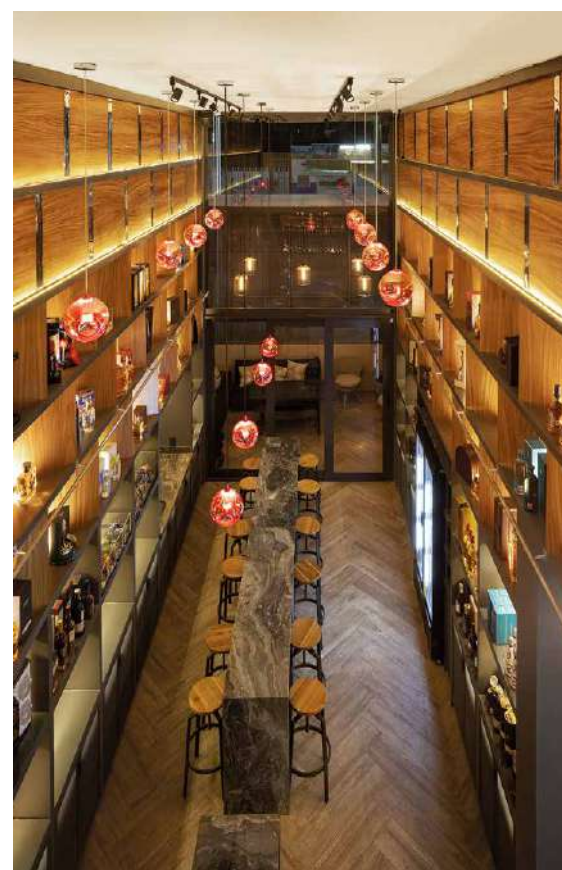
What future projects will we see soon from Clavel Arquitectos?

In Miami, we are working on a new museum with an extraordinary private collection. In Chicago, we are working on the renovation of the Millennium Parking. In Madrid, a real estate development for Kronos Homes. There are interesting years ahead.



Savour a unique experience

Studio NA, a Mexican studio which creates unique commercial experiences, has designed this establishment which specialises in the sale of exclusive wines and spirits. Here, the warmth of wood permeates every square metre. It is located in a commercial area of Arandas (Jalisco state) and its design is based on the spatial division of two physically and visually connected areas. One space is under the existing floor and functions as a warehouse and another double height space acts as a showroom and private area for wine tasting. With this approach, Studio NA is reinterpreting the classic wine cellar by mixing traditional materials, such as wood and hammered copper, with clean lines and orthogonal geometric shapes. The walls serve both for display and storage, creating a continuous rhythm throughout the store.



In the lower part of the shelving, the bottles are set out at consumer-height. In the upper part, the most exclusive pieces are exhibited, treated as true works of art. In harmony with the furniture, the flooring creates a welcoming atmosphere thanks to the natural wood effect PAR-KER® by Porcelanosa. Photos: Horacio Virissimo.



PORCELANOSA FACHADAS

The new line of construction systems, finished and ready for installation.

PORCELANOSA
quality and finishes

www.butech.net



Alta Lic. Queens, New York
Photography: Imagen Subliminal

MILAN

Combining the spirit of the Mediterranean with the power of the capital of design

Inaugurated to coincide with Milan Design Week and the Salone del Mobile, the second **PORCELANOSA Group** store in Milan was created to connect the Mediterranean design of its collections with the energy and vitality of the world capital of design. Located in the central Piazza Castello, the shop with 600 m² spread over two floors has been designed especially for professionals, including an area for coworking. In its spaces, including the outstanding Ceramoteca, architects, designers and interior designers can find out about all the group's latest developments in ceramic floor and wall tiles, natural materials, kitchen and bathroom lines and construction and technical solutions.



talking about... BAM - Biblioteca degli Alberi di Milano



With an area of 90,000 m², BAM - Milan Tree Library - is a pioneering botanical garden in the heart of the capital city of Lombardy, which is the result of a public-private collaboration between Milan City Council and the Riccardo Catella Foundation. An open space, it provides the setting for a cultural programme with more than 200 events a year which are free for all citizens.

The collaboration between the **PORCELANOSA Group** and BAM, a project supported by the Riccardo Catella Foundation, is based on the common aim to promote environmental culture and the sustainable development of the area. Set in the new district of *Porta Nuova*, the park and its extraordinary botanical collection contribute to the creation of an ecosystem where linear paths intersect with vegetation, circular forest, irregular fields, meadows, squares and equipped areas, generating an original composition over the entire surface and inviting you to stroll and harmonise with the environment.

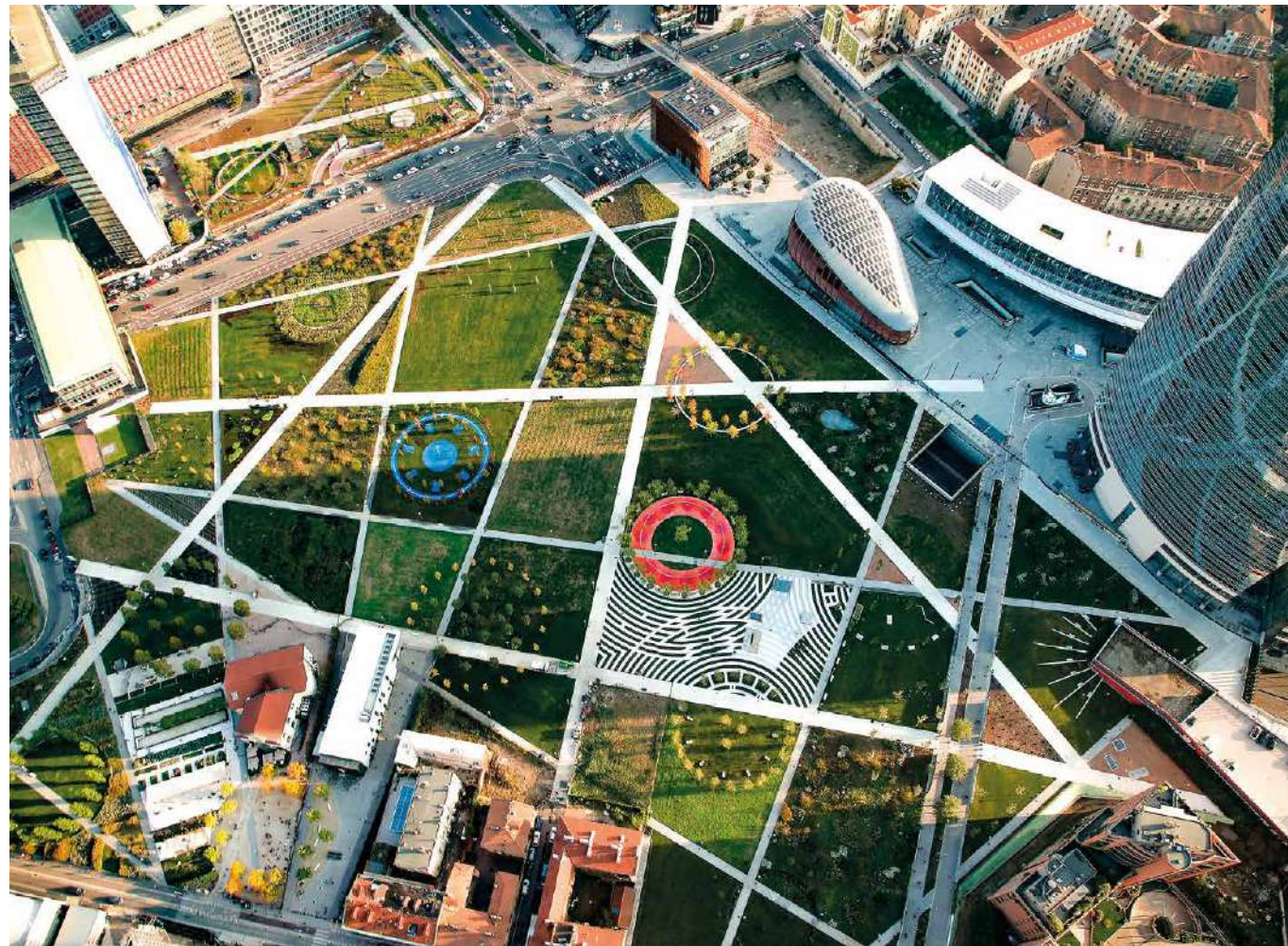
Designed to host collective experiences inspired by the UN Sustainable Development Goals, it is based on four themes: *#OpenAirCulture*, *#Education*, *#Nature* and *#Wellness*, all of which are in line with the principles that have made possible the collaboration between BAM and the **PORCELANOSA Group**, which uses innovative processes and products that respect the environment and minimise CO₂ emissions.



The park's avenues, paths and pavements are designed using state-of-the-art technology.

The concrete used filters the water back to the ground with a drainage capacity one hundred times higher than that of standard paving, thus respecting the natural water cycle and recharging the aquifer.

Sustainable measures in accordance with the principles of the alliance between the Riccardo Catella Foundation and the PORCELANOSA Group.



solid·ker[®]

technical porcelain full tile



BY APPOINTMENT TO
H.E.H. THE PRINCE OF WALES
MANUFACTURER AND DISTRIBUTOR
OF CERAMIC TILES AND BUILDING PRODUCTS
PORCELANOSA GROUP LIMITED

PORCELANOSA Grupo

XTONE

Tailoring your dreams.



PORCELANOSA Grupo

xtone-surface.com

Island: XTONE Orobico Grigio Polished 154 cm x 328 cm
Floor tiles: Forest Arce 22 cm x 90 cm · Kitchen tap: Toro Titano